

Datasheet for ABIN7176604  
**anti-SLUG antibody (AA 12-124)**[Go to Product page](#)

## 2 Images

## Overview

|                      |  |
|----------------------|--|
| Quantity:            | 100 µg   |
| Target:              | SLUG (SNAI2)   |
| Binding Specificity: | AA 12-124  |
| Reactivity:          | Human  |
| Host:                | Rabbit   |
| Clonality:           | Polyclonal   |
| Conjugate:           | This SLUG antibody is un-conjugated                        |
| Application:         | ELISA, Immunohistochemistry (IHC), Immunofluorescence (IF) |

## Product Details

|                   |  |
|-------------------|--|
| Immunogen:        | Recombinant Human Zinc finger protein SNAI2 protein (12-124AA) |
| Isotype:          | IgG  |
| Cross-Reactivity: | Human  |
| Purification:     | >95%, Protein G purified                                       |

## Target Details

|                   |  |
|-------------------|--|
| Target:           | SLUG (SNAI2)   |
| Alternative Name: | SNAI2 ( <a href="#">SNAI2 Products</a> )   |
| Background:       | Background: Transcriptional repressor that modulates both activator-dependent and basal transcription. Involved in the generation and migration of neural crest cells. Plays a role in |

## Target Details

mediating RAF1-induced transcriptional repression of the TJ protein, occludin (OCLN) and subsequent oncogenic transformation of epithelial cells (By similarity). Represses BRCA2 expression by binding to its E2-box-containing silencer and recruiting CTBP1 and HDAC1 in breast cells. In epidermal keratinocytes, binds to the E-box in ITGA3 promoter and represses its transcription. Involved in the regulation of ITGB1 and ITGB4 expression and cell adhesion and proliferation in epidermal keratinocytes. Binds to E-box2 domain of BSG and activates its expression during TGFβ1-induced epithelial-mesenchymal transition (EMT) in hepatocytes. Represses E-Cadherin/CDH1 transcription via E-box elements. Involved in osteoblast maturation. Binds to RUNX2 and SOC9 promoters and may act as a positive and negative transcription regulator, respectively, in osteoblasts. Binds to CXCL12 promoter via E-box regions in mesenchymal stem cells and osteoblasts. Plays an essential role in TWIST1-induced EMT and its ability to promote invasion and metastasis.

Aliases: MGC10182 antibody, Neural crest transcription factor Slug antibody, Protein snail homolog 2 antibody, Slug (chicken homolog) zinc finger protein antibody, Slug homolog zinc finger protein antibody, Slug zinc finger protein antibody, SLUGH antibody, SLUGH 1 antibody, SLUGH1 antibody, SNAI 2 antibody, Snai2 antibody, SNAI2\_HUMAN antibody, Snail 2 antibody, Snail homolog 2 antibody, Snail2 antibody, WS 2D antibody, WS2D antibody, Zinc finger protein SLUG antibody, Zinc finger protein SNAI2 antibody

UniProt: [O43623](#)

## Application Details

Application Notes: Recommended dilution: IHC:1:20-1:200, IF:1:50-1:200,

Restrictions: For Research Use only

## Handling

Format: Liquid

Buffer: Preservative: 0.03 % Proclin 300  
Constituents: 50 % Glycerol, 0.01M PBS, PH 7.4

Preservative: ProClin

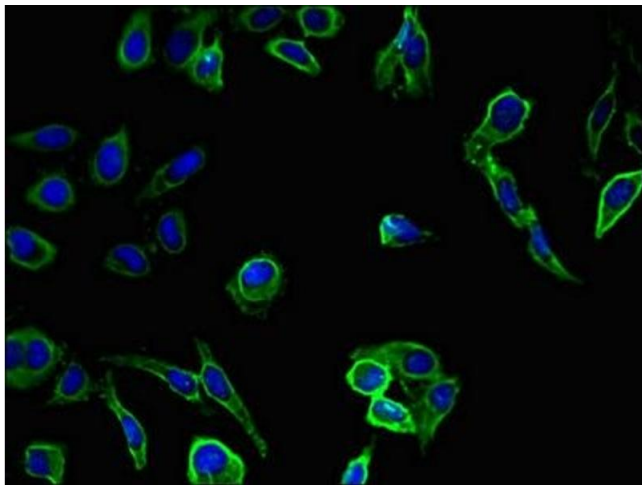
Precaution of Use: This product contains ProClin: a POISONOUS AND HAZARDOUS SUBSTANCE which should be handled by trained staff only.

Storage: -20 °C,-80 °C

## Handling

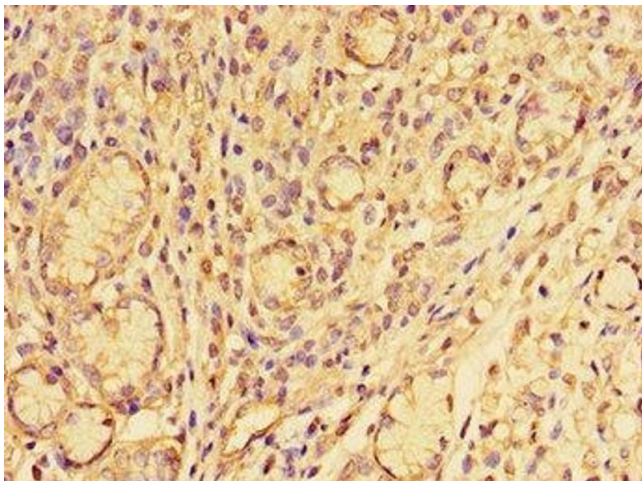
Storage Comment: Upon receipt, store at -20°C or -80°C. Avoid repeated freeze.

## Images



### Immunofluorescence

**Image 1.** Immunofluorescent analysis of HeLa cells using ABIN7176604 at dilution of 1:100 and Alexa Fluor 488-conjugated AffiniPure Goat Anti-Rabbit IgG(H+L)



### Immunohistochemistry

**Image 2.** Immunohistochemistry of paraffin-embedded human gastric tissue using ABIN7176604 at dilution of 1:100