



[Go to Product page](#)

Datasheet for ABIN7176692

anti-SLC39A7 antibody (AA 235-380)

3 Images

Overview

Quantity:	100 µL
Target:	SLC39A7
Binding Specificity:	AA 235-380
Reactivity:	Human
Host:	Rabbit
Clonality:	Polyclonal
Conjugate:	This SLC39A7 antibody is un-conjugated
Application:	Western Blotting (WB), ELISA, Immunohistochemistry (IHC)

Product Details

Immunogen:	Recombinant Human Zinc transporter SLC39A7 protein (235-380AA)
Isotype:	IgG
Cross-Reactivity:	Human
Purification:	Antigen Affinity Purified

Target Details

Target:	SLC39A7
Alternative Name:	SLC39A7 (SLC39A7 Products)
Background:	Background: Zinc transporter, that transports Zn(2+) from the endoplasmic reticulum/Golgi apparatus to the cytosol. Transport is stimulated by growth factors, such as EGF, and Ca(2+),

Target Details

as well as by exogenous Zn(2+).

Aliases: D6S115E antibody, D6S2244E antibody, H2 KE4 antibody, Histidine rich membrane protein Ke4 antibody, Histidine-rich membrane protein Ke4 antibody, HKE4 antibody, HLA class II region expressed gene KE4 antibody, KE4 antibody, Ke4 gene mouse, human homolog of antibody, Really interesting new gene 5 protein antibody, RING5 antibody, S39A7_HUMAN antibody, SLC39A7 antibody, Solute carrier family 39 (zinc transporter), member 7 antibody, Solute carrier family 39 member 7 antibody, solute carrier family 39 zinc transporter member 7 antibody, Zinc transporter SLC39A7 antibody, ZIP7 antibody

UniProt: [Q92504](#)

Pathways: [Transition Metal Ion Homeostasis](#)

Application Details

Application Notes: Recommended dilution: WB:1:1000-1:5000, IHC:1:20-1:200,

Restrictions: For Research Use only

Handling

Format: Liquid

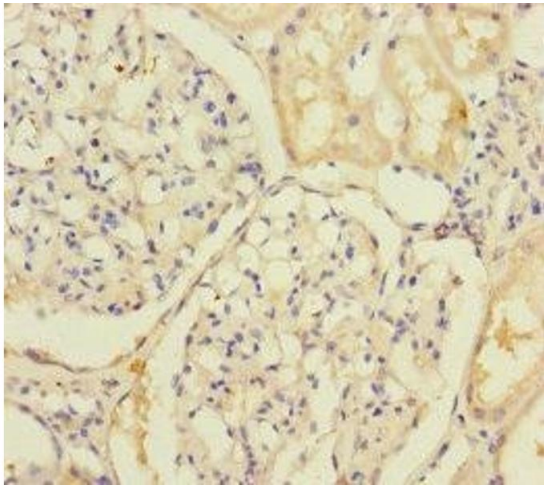
Buffer: PBS with 0.02 % sodium azide, 50 % glycerol, pH 7.3.

Preservative: Sodium azide

Precaution of Use: This product contains Sodium azide: a POISONOUS AND HAZARDOUS SUBSTANCE which should be handled by trained staff only.

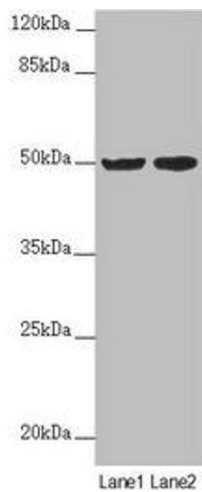
Storage: -20 °C,-80 °C

Storage Comment: Upon receipt, store at -20°C or -80°C. Avoid repeated freeze.



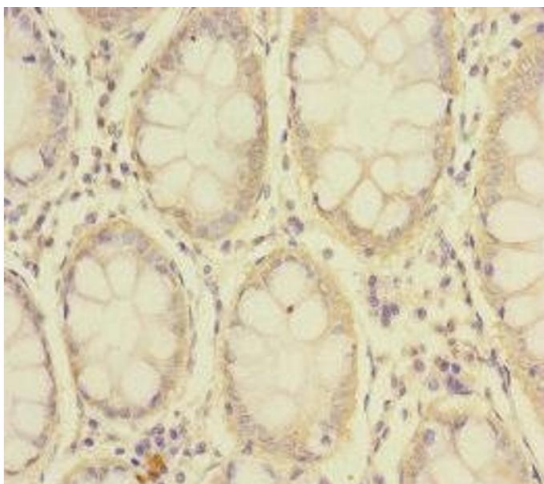
Immunohistochemistry

Image 1. Immunohistochemistry of paraffin-embedded human kidney tissue using ABIN7176692 at dilution of 1:100



Western Blotting

Image 2. Western blot All lanes: SLC39A7 antibody at 4.06 μ g/mL Lane 1: MCF-7 whole cell lysate Lane 2: HepG2 whole cell lysate Secondary Goat polyclonal to rabbit IgG at 1/10000 dilution Predicted band size: 51 kDa Observed band size: 51 kDa



Immunohistochemistry

Image 3. Immunohistochemistry of paraffin-embedded human colon cancer using ABIN7176692 at dilution of 1:100