



[Go to Product page](#)

Datasheet for ABIN7176698
anti-SLC39A1 antibody (AA 41-317)

2 Images

Overview

Quantity:	100 µL
Target:	SLC39A1
Binding Specificity:	AA 41-317
Reactivity:	Human
Host:	Rabbit
Clonality:	Polyclonal
Conjugate:	This SLC39A1 antibody is un-conjugated
Application:	ELISA, Immunohistochemistry (IHC), Immunofluorescence (IF)

Product Details

Immunogen:	Recombinant Human Zinc transporter ZIP10 protein (41-317AA)
Isotype:	IgG
Cross-Reactivity:	Human
Purification:	Antigen Affinity Purified

Target Details

Target:	SLC39A1
Alternative Name:	SLC39A1 (SLC39A1 Products)
Background:	Background: May act as a zinc-influx transporter. Aliases: 2900042E17Rik antibody, 5430433I10 antibody, DKFZp781L10106 antibody, KIAA1265

Target Details

antibody, LZT-Hs2 antibody, MGC126565 antibody, MGC138428 antibody, mKIAA1265 antibody, OTTMUSP00000023810 antibody, S39AA_HUMAN antibody, slc39a10 antibody, Solute carrier family 39 (metal ion transporter), member 10 antibody, Solute carrier family 39 (zinc transporter), member 10 antibody, Solute carrier family 39 member 10 antibody, Zinc transporter ZIP10 antibody, ZIP-10 antibody, ZIP10 antibody, Zrt- and Irt-like protein 10 antibody

UniProt: [Q9ULF5](#)

Pathways: [Autophagy](#)

Application Details

Application Notes: Recommended dilution: IHC:1:20-1:200, IF:1:50-1:200,

Restrictions: For Research Use only

Handling

Format: Liquid

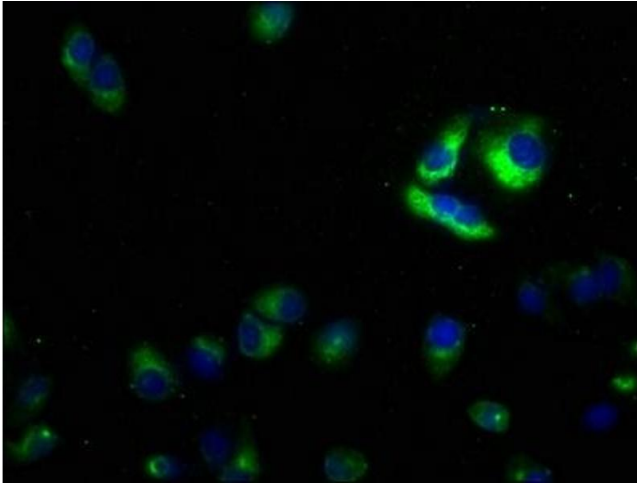
Buffer: Preservative: 0.03 % Proclin 300
Constituents: 50 % Glycerol, 0.01M PBS, pH 7.4

Preservative: ProClin

Precaution of Use: This product contains ProClin: a POISONOUS AND HAZARDOUS SUBSTANCE which should be handled by trained staff only.

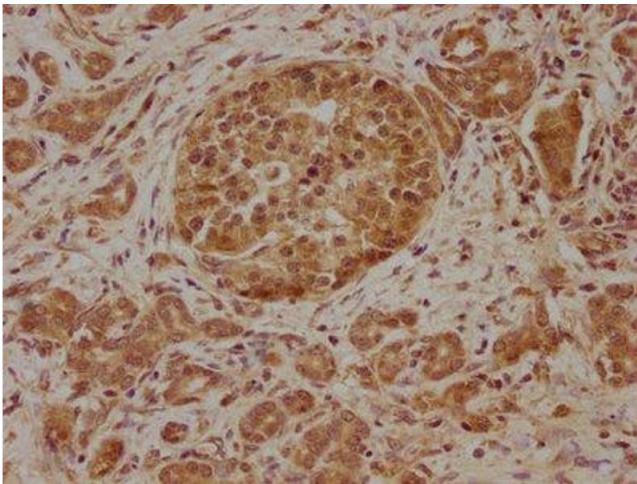
Storage: -20 °C, -80 °C

Storage Comment: Upon receipt, store at -20°C or -80°C. Avoid repeated freeze.



Immunofluorescence

Image 1. Immunofluorescence staining of HeLa cells with ABIN7176698 at 1:50, counter-stained with DAPI. The cells were fixed in 4 % formaldehyde, permeabilized using 0.2 % Triton X-100 and blocked in 10 % normal Goat Serum. The cells were then incubated with the antibody overnight at 4 °C. The secondary antibody was Alexa Fluor 488-conjugated AffiniPure Goat Anti-Rabbit IgG(H+L).



Immunohistochemistry

Image 2. IHC image of ABIN7176698 diluted at 1:100 and staining in paraffin-embedded human pancreatic cancer performed on a Leica Bond™ system. After dewaxing and hydration, antigen retrieval was mediated by high pressure in a citrate buffer (pH 6.0). Section was blocked with 10 % normal goat serum 30 min at RT. Then primary antibody (1 % BSA) was incubated at 4 °C overnight. The primary is detected by a biotinylated secondary antibody and visualized using an HRP conjugated SP system.