



[Go to Product page](#)

Datasheet for ABIN7176745
anti-CPLX2 antibody (AA 23-97)

1 Image

Overview

Quantity:	100 µg
Target:	CPLX2
Binding Specificity:	AA 23-97
Reactivity:	Hypocrea jecorina
Host:	Rabbit
Clonality:	Polyclonal
Conjugate:	This CPLX2 antibody is un-conjugated
Application:	Western Blotting (WB), ELISA

Product Details

Immunogen:	Recombinant Hypocrea jecorina Hydrophobin-1 protein (23-97AA)
Isotype:	IgG
Cross-Reactivity:	Hypocrea jecorina
Purification:	>95%, Protein G purified

Target Details

Target:	CPLX2
Alternative Name:	hfb1 (CPLX2 Products)
Background:	Background: Contributes to surface hydrophobicity, which is important for processes such as association of hyphae in reproductive structures, dispersal of aerial spores and adhesion of

Target Details

pathogens to host structures.

Aliases: hfb1 antibody, Hydrophobin-1 antibody, Hydrophobin I antibody, HFBI antibody

UniProt: [P52754](#)

Pathways: [Synaptic Vesicle Exocytosis](#)

Application Details

Application Notes: Recommended dilution: WB:1:500-1:5000,

Restrictions: For Research Use only

Handling

Format: Liquid

Buffer: Preservative: 0.03 % Proclin 300
Constituents: 50 % Glycerol, 0.01M PBS, pH 7.4

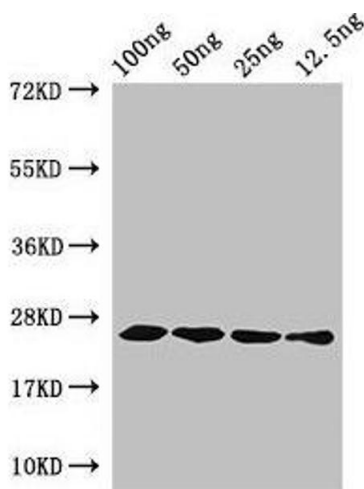
Preservative: ProClin

Precaution of Use: This product contains ProClin: a POISONOUS AND HAZARDOUS SUBSTANCE which should be handled by trained staff only.

Storage: -20 °C,-80 °C

Storage Comment: Upon receipt, store at -20°C or -80°C. Avoid repeated freeze.

Images



Western Blotting

Image 1. Western Blot Positive WB detected in Recombinant protein All lanes: hfb1 antibody at 4 µg/mL Secondary Goat polyclonal to rabbit IgG at 1/50000 dilution predicted band size: 25 kDa observed band size: 25 kDa