



[Go to Product page](#)

Datasheet for ABIN7176863
anti-Profilin antibody (AA 1-133)

1 Image

Overview

Quantity:	100 µg
Target:	Profilin (PFN)
Binding Specificity:	AA 1-133
Reactivity:	Mercenaria (Clam)
Host:	Rabbit
Clonality:	Polyclonal
Conjugate:	This Profilin antibody is un-conjugated
Application:	ELISA, Western Blotting (WB)

Product Details

Immunogen:	Recombinant Mercurialis annua Profilin protein (1-133AA)
Isotype:	IgG
Cross-Reactivity:	Mercenaria (Clam)
Purification:	>95%, Protein G purified

Target Details

Target:	Profilin (PFN)
Alternative Name:	Profilin (PFN Products)
Background:	Background: Binds to actin and affects the structure of the cytoskeleton. At high concentrations, profilin prevents the polymerization of actin, whereas it enhances it at low

Target Details

concentrations. By binding to PIP2, it inhibits the formation of IP3 and DG (By similarity).

Aliases: Profilin antibody, Pollen allergen Mer a 1 antibody, allergen Mer a 1 antibody

UniProt: [O49894](#)

Application Details

Application Notes: Recommended dilution: WB:1:500-1:5000,

Restrictions: For Research Use only

Handling

Format: Liquid

Buffer: Preservative: 0.03 % Proclin 300
Constituents: 50 % Glycerol, 0.01M PBS, pH 7.4

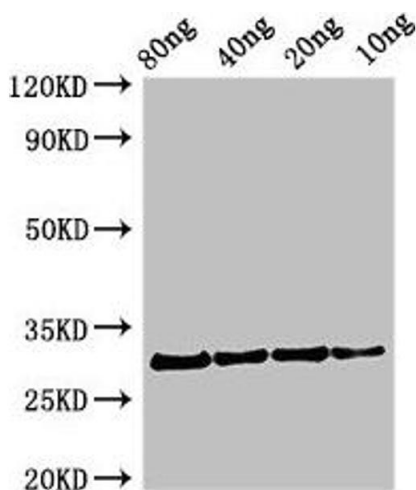
Preservative: ProClin

Precaution of Use: This product contains ProClin: a POISONOUS AND HAZARDOUS SUBSTANCE which should be handled by trained staff only.

Storage: -20 °C,-80 °C

Storage Comment: Upon receipt, store at -20°C or -80°C. Avoid repeated freeze.

Images



Western Blotting

Image 1. Western Blot Positive WB detected in Recombinant protein All lanes: Profilin antibody at 2.7 μ g/mL Secondary Goat polyclonal to rabbit IgG at 1/50000 dilution Predicted band size: 31 kDa Observed band size: 31 kDa