



[Go to Product page](#)

Datasheet for ABIN7177217
anti-GLP1R antibody (AA 22-145)

1 Image

Overview

Quantity:	100 µg
Target:	GLP1R
Binding Specificity:	AA 22-145
Reactivity:	Mouse
Host:	Rabbit
Clonality:	Polyclonal
Conjugate:	This GLP1R antibody is un-conjugated
Application:	Western Blotting (WB), ELISA

Product Details

Immunogen:	Recombinant Mouse Glucagon-like peptide 1 receptor protein (22-145AA)
Isotype:	IgG
Cross-Reactivity:	Mouse
Purification:	>95%, Protein G purified

Target Details

Target:	GLP1R
Alternative Name:	Glp1r (GLP1R Products)
Background:	Background: This is a receptor for glucagon-like peptide 1. The activity of this receptor is mediated by G proteins which activate adenylyl cyclase.

Target Details

Aliases: Glp1rGlucagon-like peptide 1 receptor antibody, GLP-1 receptor antibody, GLP-1-R antibody, GLP-1R antibody

UniProt: [O35659](#)

Pathways: [Positive Regulation of Peptide Hormone Secretion](#), [Hormone Transport](#), [cAMP Metabolic Process](#), [Feeding Behaviour](#)

Application Details

Application Notes: Recommended dilution: WB:1:500-1:5000,

Restrictions: For Research Use only

Handling

Format: Liquid

Buffer: Preservative: 0.03 % Proclin 300
Constituents: 50 % Glycerol, 0.01M PBS, PH 7.4

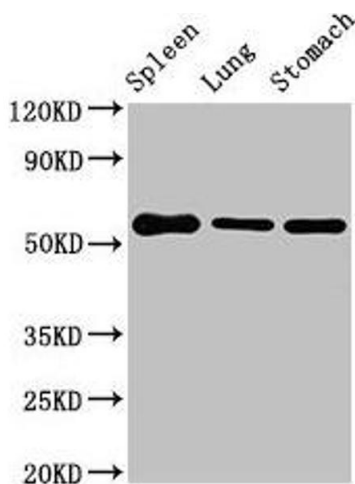
Preservative: ProClin

Precaution of Use: This product contains ProClin: a POISONOUS AND HAZARDOUS SUBSTANCE which should be handled by trained staff only.

Storage: -20 °C,-80 °C

Storage Comment: Upon receipt, store at -20°C or -80°C. Avoid repeated freeze.

Images



Western Blotting

Image 1. Western Blot Positive WB detected in: Mouse spleen tissue, Mouse lung tissue, Mouse stomach tissue All lanes: Glp1r antibody at 3 µg/mL Secondary Goat polyclonal to rabbit IgG at 1/50000 dilution Predicted band size: 54 kDa Observed band size: 54 kDa