



[Go to Product page](#)

Datasheet for ABIN7177317
anti-IGFBPI antibody (AA 26-272)

1 Image

Overview

Quantity:	100 µg
Target:	IGFBPI
Binding Specificity:	AA 26-272
Reactivity:	Mouse
Host:	Rabbit
Clonality:	Polyclonal
Conjugate:	This IGFBPI antibody is un-conjugated
Application:	Western Blotting (WB), ELISA

Product Details

Immunogen:	Recombinant Mouse Insulin-like growth factor-binding protein 1 protein (26-272AA)
Isotype:	IgG
Cross-Reactivity:	Human, Mouse
Purification:	>95%, Protein G purified

Target Details

Target:	IGFBPI
Alternative Name:	Igfbp1 (IGFBPI Products)
Background:	Background: IGF-binding proteins prolong the half-life of the IGFs and have been shown to either inhibit or stimulate the growth promoting effects of the IGFs on cell culture. They alter the

Target Details

interaction of IGFs with their cell surface receptors. Promotes cell migration (By similarity).

Aliases: Igfbp1 antibody, Igfbp-1 antibody, Insulin-like growth factor-binding protein 1 antibody, IBP-1 antibody, IGF-binding protein 1 antibody, IGFBP-1 antibody

UniProt: [P47876](#)

Pathways: [Myometrial Relaxation and Contraction](#), [ER-Nucleus Signaling](#), [Growth Factor Binding](#)

Application Details

Application Notes: Recommended dilution: WB:1:1000-1:5000,

Restrictions: For Research Use only

Handling

Format: Liquid

Buffer: Preservative: 0.03 % Proclin 300
Constituents: 50 % Glycerol, 0.01M PBS, PH 7.4

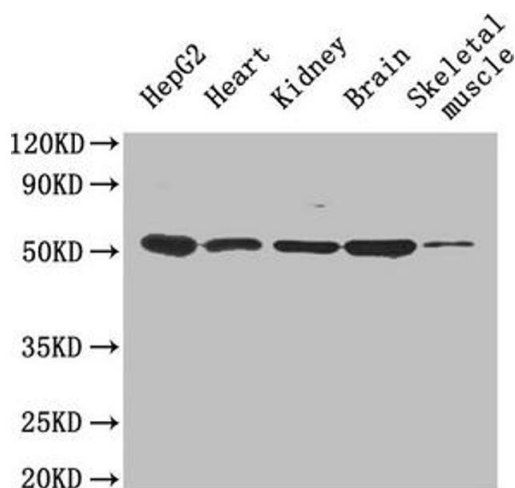
Preservative: ProClin

Precaution of Use: This product contains ProClin: a POISONOUS AND HAZARDOUS SUBSTANCE which should be handled by trained staff only.

Storage: -20 °C,-80 °C

Storage Comment: Upon receipt, store at -20°C or -80°C. Avoid repeated freeze.

Images



Western Blotting

Image 1. Western Blot Positive WB detected in: HepG2 whole cell lysate, Mouse heart tissue, Mouse kidney tissue, Mouse brain tissue, Mouse skeletal muscle tissue All lanes: Igfbp1 antibody at 0.6 µg/mL Secondary Goat polyclonal to rabbit IgG at 1/50000 dilution Predicted band size: 30 kDa Observed band size: 50 kDa