



[Go to Product page](#)

Datasheet for ABIN7177421  
**anti-MIF antibody (AA 2-115)**

1 Image

### Overview

Quantity:	100 µL
Target:	MIF
Binding Specificity:	AA 2-115
Reactivity:	Mouse
Host:	Rabbit
Clonality:	Polyclonal
Conjugate:	This MIF antibody is un-conjugated
Application:	Western Blotting (WB), ELISA

### Product Details

Immunogen:	Recombinant Mouse Macrophage migration inhibitory factor protein (2-115AA)
Isotype:	IgG
Cross-Reactivity:	Mouse
Purification:	>95%, Antigen Affinity purified & Affinity purified

### Target Details

Target:	MIF
Alternative Name:	Mif ( <a href="#">MIF Products</a> )
Background:	Background: Pro-inflammatory cytokine. Involved in the innate immune response to bacterial pathogens. The expression of MIF at sites of inflammation suggests a role as mediator in

## Target Details

---

regulating the function of macrophages in host defense. Counteracts the anti-inflammatory activity of glucocorticoids. Has phenylpyruvate tautomerase and dopachrome tautomerase activity (in vitro), but the physiological substrate is not known. It is not clear whether the tautomerase activity has any physiological relevance, and whether it is important for cytokine activity (By similarity).

Aliases: MifMacrophage migration inhibitory factor antibody, MIF antibody, EC 5.3.2.1 antibody, Delayed early response protein 6 antibody, DER6 antibody, Glycosylation-inhibiting factor antibody, GIF antibody, L-dopachrome isomerase antibody, L-dopachrome tautomerase antibody, EC 5.3.3.12 antibody, Phenylpyruvate tautomerase antibody

---

UniProt: [P34884](#)

---

Pathways: [Regulation of Systemic Arterial Blood Pressure by Hormones](#), [Positive Regulation of Immune Effector Process](#), [Production of Molecular Mediator of Immune Response](#), [Regulation of Carbohydrate Metabolic Process](#), [Feeding Behaviour](#), [Smooth Muscle Cell Migration](#), [Negative Regulation of intrinsic apoptotic Signaling](#)

## Application Details

---

---

Application Notes: Recommended dilution: WB:1:1000-1:5000,

---

Restrictions: For Research Use only

## Handling

---

---

Format: Liquid

---

Buffer: Preservative: 0.03 % Proclin 300  
Constituents: 50 % Glycerol, 0.01M PBS, pH 7.4

---

Preservative: ProClin

---

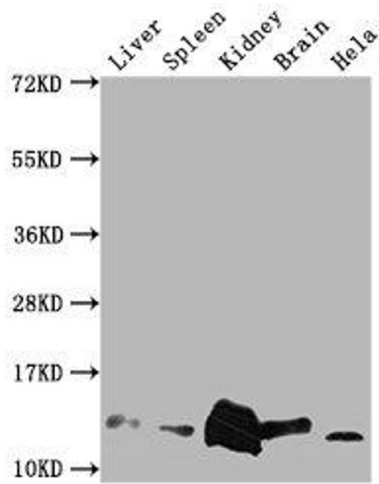
Precaution of Use: This product contains ProClin: a POISONOUS AND HAZARDOUS SUBSTANCE which should be handled by trained staff only.

---

Storage: -20 °C,-80 °C

---

Storage Comment: Upon receipt, store at -20°C or -80°C. Avoid repeated freeze.



### Western Blotting

**Image 1.** Western Blot Positive WB detected in: Mouse Liver tissue, Mouse Spleen tissue, Mouse kidney tissue, Mouse Brain tissue, HeLa whole cell lysate All lanes: Mif antibody at 1:2000 Secondary Goat polyclonal to rabbit IgG at 1/50000 dilution Predicted band size: 13 kDa Observed band size: 13 kDa