

Datasheet for ABIN7177770
anti-ATOH1 antibody (AA 1-351)[Go to Product page](#)

1 Image

Overview

Quantity:	100 µg
Target:	ATOH1
Binding Specificity:	AA 1-351
Reactivity:	Mouse
Host:	Rabbit
Clonality:	Polyclonal
Conjugate:	This ATOH1 antibody is un-conjugated
Application:	Western Blotting (WB), ELISA

Product Details

Immunogen:	Recombinant Mouse Protein atonal homolog 1 protein (1-351AA)
Isotype:	IgG
Cross-Reactivity:	Mouse
Purification:	>95%, Protein G purified

Target Details

Target:	ATOH1
Alternative Name:	Atoh1 (ATOH1 Products)
Background:	Background: Transcriptional regulator. Activates E box-dependent transcription in collaboration with TCF3/E47, but the activity is completely antagonized by the negative regulator of

Target Details

neurogenesis HES1. Plays a role in the differentiation of subsets of neural cells by activating E box-dependent transcription.

Aliases: Atoh1 antibody, Ath1Protein atonal homolog 1 antibody, Helix-loop-helix protein mATH-1 antibody, mATH1 antibody

UniProt: [P48985](#)

Application Details

Application Notes: Recommended dilution: WB:1:500-1:5000,

Restrictions: For Research Use only

Handling

Format: Liquid

Buffer: Preservative: 0.03 % Proclin 300
Constituents: 50 % Glycerol, 0.01M PBS, PH 7.4

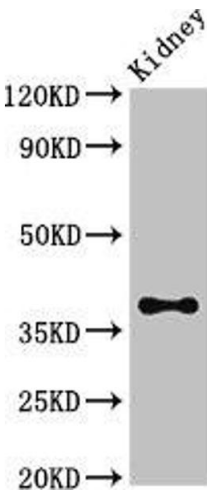
Preservative: ProClin

Precaution of Use: This product contains ProClin: a POISONOUS AND HAZARDOUS SUBSTANCE which should be handled by trained staff only.

Storage: -20 °C,-80 °C

Storage Comment: Upon receipt, store at -20°C or -80°C. Avoid repeated freeze.

Images



Western Blotting

Image 1. Western Blot Positive WB detected in: Mouse kidney tissue All lanes: Atoh1 antibody at 3.4 µg/mL Secondary Goat polyclonal to rabbit IgG at 1/50000 dilution Predicted band size: 38 kDa Observed band size: 38 kDa