



[Go to Product page](#)

Datasheet for ABIN7177818  
**anti-Renin-2 antibody (AA 64-351)**

2 Images

### Overview

Quantity:	100 µg
Target:	Renin-2
Binding Specificity:	AA 64-351
Reactivity:	Mouse
Host:	Rabbit
Clonality:	Polyclonal
Conjugate:	This Renin-2 antibody is un-conjugated
Application:	ELISA, Western Blotting (WB)

### Product Details

Immunogen:	Recombinant Mouse Renin-2 protein (64-351AA)
Isotype:	IgG
Cross-Reactivity:	Human, Mouse
Purification:	>95%, Protein G purified

### Target Details

Target:	Renin-2
Alternative Name:	Ren2 ( <a href="#">Renin-2 Products</a> )
Background:	Background: Renin is a highly specific endopeptidase, related to pepsin, whose only known function is to generate angiotensin I from angiotensinogen in the plasma, initiating a cascade of

## Target Details

---

reactions that produce an elevation of blood pressure and increased sodium retention by the kidney. Its function in the salivary gland is not understood.

Aliases: Ren2 antibody, Ren-2 antibody, Renin-2 antibody, EC 3.4.23.15 antibody, Angiotensinogenase antibody, Submandibular gland renin) [Cleaved into: Renin-2 heavy chain, Renin-2 light chain] antibody

---

UniProt: [P00796](#)

---

Pathways: [Peptide Hormone Metabolism](#)

## Application Details

---

Application Notes: Recommended dilution: WB:1:1000-1:5000,

---

Restrictions: For Research Use only

## Handling

---

Format: Liquid

---

Buffer: Preservative: 0.03 % Proclin 300  
Constituents: 50 % Glycerol, 0.01M PBS, PH 7.4

---

Preservative: ProClin

---

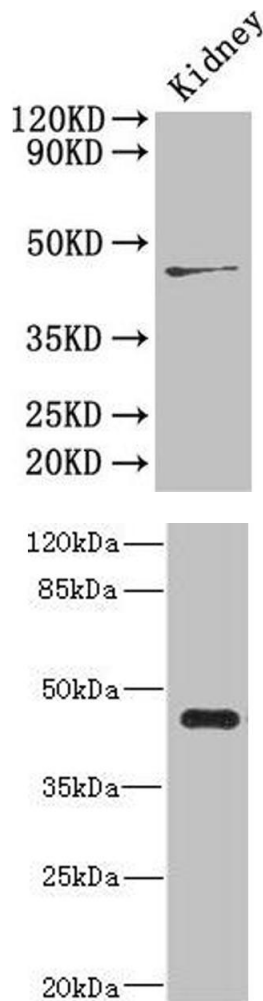
Precaution of Use: This product contains ProClin: a POISONOUS AND HAZARDOUS SUBSTANCE which should be handled by trained staff only.

---

Storage: -20 °C,-80 °C

---

Storage Comment: Upon receipt, store at -20°C or -80°C. Avoid repeated freeze.



#### Western Blotting

**Image 1.** Western Blot Positive WB detected in: Mouse kidney tissue All lanes: Ren2 antibody at 4 µg/mL Secondary Goat polyclonal to rabbit IgG at 1/50000 dilution Predicted band size: 45 kDa Observed band size: 45 kDa

#### Western Blotting

**Image 2.** Western blot All lanes: Ren2 antibody at 2 µg/mL + MCF-7 whole cell lysate Secondary Goat polyclonal to rabbit IgG at 1/10000 dilution Predicted band size: 45 kDa Observed band size: 45 kDa