

Datasheet for ABIN7178011
anti-WDPCP antibody (AA 1-722)[Go to Product page](#)

1 Image

Overview

Quantity:	100 µg
Target:	WDPCP
Binding Specificity:	AA 1-722
Reactivity:	Mouse
Host:	Rabbit
Clonality:	Polyclonal
Conjugate:	This WDPCP antibody is un-conjugated
Application:	ELISA, Western Blotting (WB)

Product Details

Immunogen:	Recombinant Mouse WD repeat-containing and planar cell polarity effector protein fritz homolog protein (1-722AA)
Isotype:	IgG
Cross-Reactivity:	Mouse
Purification:	>95%, Protein G purified

Target Details

Target:	WDPCP
Alternative Name:	Wdpcp (WDPCP Products)
Background:	Background: Probable effector of the planar cell polarity signaling pathway which regulates the

Target Details

septin cytoskeleton in both ciliogenesis and collective cell movements By similarity.
Aliases: WdpcpWD repeat-containing and planar cell polarity effector protein fritz homolog antibody, mFrtz antibody, Homolog-13 antibody, WD repeat-containing and planar cell polarity effector protein antibody

UniProt: [Q8C456](#)

Application Details

Application Notes: Recommended dilution: WB:1:1000-1:5000,

Restrictions: For Research Use only

Handling

Format: Liquid

Buffer: Preservative: 0.03 % Proclin 300
Constituents: 50 % Glycerol, 0.01M PBS, PH 7.4

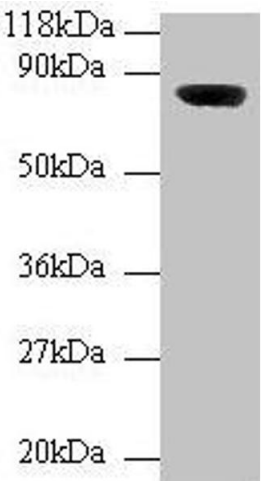
Preservative: ProClin

Precaution of Use: This product contains ProClin: a POISONOUS AND HAZARDOUS SUBSTANCE which should be handled by trained staff only.

Storage: -20 °C,-80 °C

Storage Comment: Upon receipt, store at -20°C or -80°C. Avoid repeated freeze.

Images



Western Blotting

Image 1. Western blot All lanes: Wdpcp antibody at 2 µg/mL + Mouse brain tissue Secondary Goat polyclonal to rabbit IgG at 1/10000 dilution Predicted band size: 82, 73 kDa
Observed band size: 82 kDa