



[Go to Product page](#)

Datasheet for ABIN7178377

## anti-ATG5 antibody

### 3 Images

#### Overview

Quantity:	100 µg
Target:	ATG5
Reactivity:	Human
Host:	Mouse
Clonality:	Monoclonal
Conjugate:	This ATG5 antibody is un-conjugated
Application:	Western Blotting (WB), ELISA, Immunohistochemistry (IHC)

#### Product Details

Immunogen:	Recombinant Protein
Isotype:	IgG
Cross-Reactivity:	Human, Mouse, Rat
Purification:	Affinity purified

#### Target Details

Target:	ATG5
Alternative Name:	ATG5 ( <a href="#">ATG5 Products</a> )
Background:	Autophagy protein 5 (APG5-like) (Apoptosis-specific protein)
UniProt:	<a href="#">Q9H1Y0</a>
Pathways:	<a href="#">Activation of Innate immune Response</a> , <a href="#">Production of Molecular Mediator of Immune Response</a>

## Target Details

---

, [Autophagy](#)

## Application Details

---

Application Notes: Recommended dilution:WB:1:500-1:5000,IHC:1:50-1:500,

Restrictions: For Research Use only

## Handling

---

Format: Liquid

Buffer: PBS, pH 7.4, containing 0.02 % sodium azide as Preservative and 50 % Glycerol.

Preservative: Sodium azide

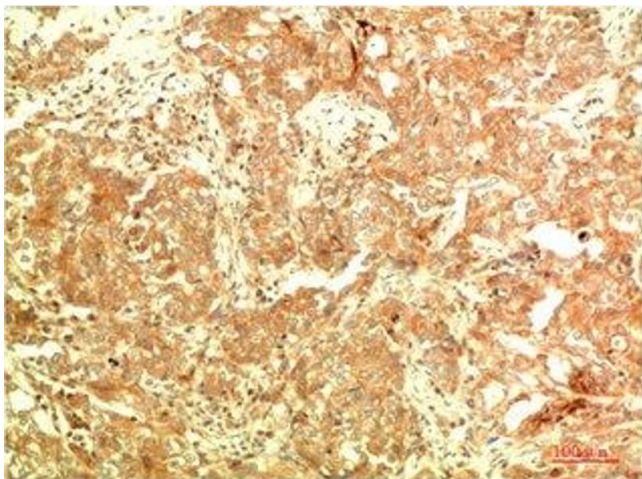
Precaution of Use: This product contains Sodium azide: a POISONOUS AND HAZARDOUS SUBSTANCE which should be handled by trained staff only.

Storage: -20 °C,-80 °C

Storage Comment: Upon receipt, store at -20°C or -80°C. Avoid repeated freeze.

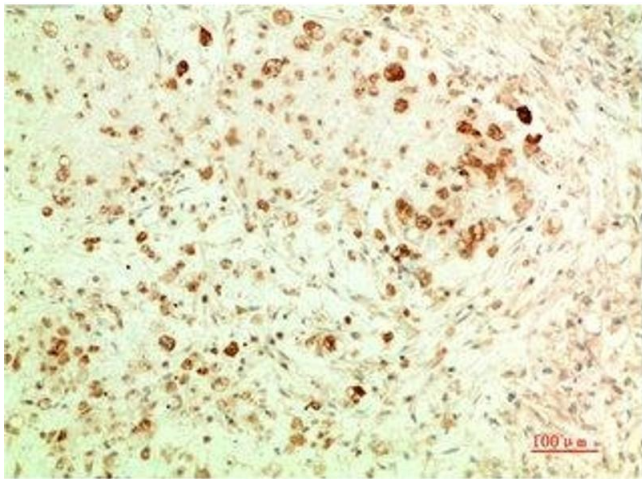
## Images

---



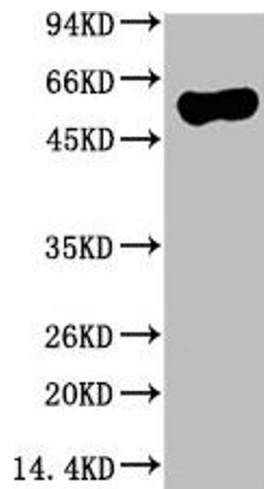
### Immunohistochemistry

**Image 1.** Immunohistochemical analysis of paraffin-embedded Human Breast Carcinoma Tissue using ATG5 Mouse mAb diluted at 1:2000



### Immunohistochemistry

**Image 2.** Immunohistochemical analysis of paraffin-embedded Human Ovarian Carcinoma Tissue using ATG5 Mouse mAb diluted at 1:200.



### Western Blotting

**Image 3.** Western blot analysis of Hela Cell Lysate using ATG5 Mouse mAb diluted at 1:10000.