



Datasheet for ABIN7178505  
**anti-Lamin B1 antibody**



[Go to Product page](#)

2 Images

Overview

|              |  |
|--------------|--|
| Quantity:    | 100 µg   |
| Target:      | Lamin B1 (LMNB1)                                       |
| Reactivity:  | Human  |
| Host:        | Mouse  |
| Clonality:   | Monoclonal   |
| Conjugate:   | This Lamin B1 antibody is un-conjugated                |
| Application: | Western Blotting (WB), ELISA, Immunoprecipitation (IP) |

Product Details

|                   |                     |
|-------------------|---------------------|
| Immunogen:        | Recombinant Protein |
| Isotype:          | IgG                 |
| Cross-Reactivity: | Human, Mouse, Rat   |
| Purification:     | Affinity purified   |

Target Details

|                   |   |
|-------------------|---|
| Target:           | Lamin B1 (LMNB1)  |
| Alternative Name: | LMNB1 ( <a href="#">LMNB1 Products</a> )                |
| Background:       | LMNB1, LMN2, LMNB, Lamin-B1                             |
| UniProt:          | <a href="#">P20700</a>                                  |
| Pathways:         | <a href="#">Apoptosis, Caspase Cascade in Apoptosis</a> |

## Application Details

Application Notes: Recommended dilution:WB:1:500-1:5000,IP:1:200-1:2000,

Restrictions: For Research Use only

## Handling

Format: Liquid

Buffer: PBS, pH 7.4, containing 0.02 % sodium azide as Preservative and 50 % Glycerol.

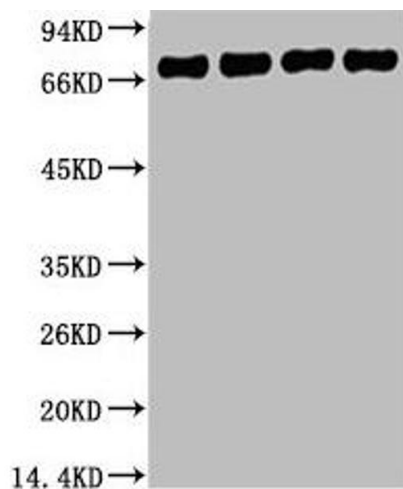
Preservative: Sodium azide

Precaution of Use: This product contains Sodium azide: a POISONOUS AND HAZARDOUS SUBSTANCE which should be handled by trained staff only.

Storage: -20 °C,-80 °C

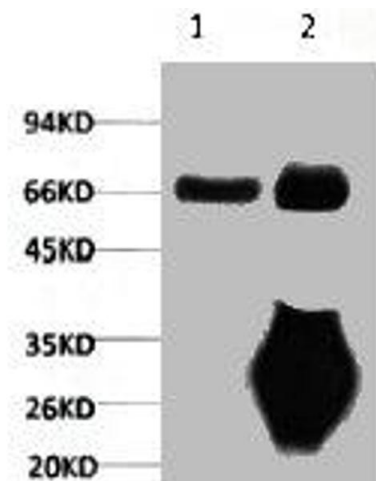
Storage Comment: Upon receipt, store at -20°C or -80°C. Avoid repeated freeze.

## Images



### Western Blotting

**Image 1.** Western blot analysis of 1) HepG2, 2) 293T, 3) Mouse Brain Tissue, 4) Rat Brain Tissue, diluted at 1:5000.



### Immunoprecipitation

**Image 2.** 1) Input: Mouse Brain Tissue Lysate 2) IP product: IP dilute 1:200