



[Go to Product page](#)

Datasheet for ABIN7178610

## anti-TUBA1A antibody

### 2 Images

#### Overview

Quantity:	100 µg
Target:	TUBA1A (Tuba1a)
Reactivity:	Human
Host:	Mouse
Clonality:	Monoclonal
Conjugate:	This TUBA1A antibody is un-conjugated
Application:	Western Blotting (WB), ELISA, Immunoprecipitation (IP)

#### Product Details

Immunogen:	Recombinant Protein
Isotype:	IgG
Cross-Reactivity:	Human, Mouse, Rat
Purification:	Affinity purified

#### Target Details

Target:	TUBA1A (Tuba1a)
Alternative Name:	TUBA1A ( <a href="#">Tuba1a Products</a> )
Background:	Tubulin alpha-1A chain
UniProt:	<a href="#">Q71U36</a> , <a href="#">P68363</a>
Pathways:	<a href="#">Microtubule Dynamics</a> , <a href="#">M Phase</a>

## Application Details

Application Notes: Recommended dilution:WB:1:500-1:5000,IP:1:200-1:2000,

Restrictions: For Research Use only

## Handling

Format: Liquid

Buffer: PBS, pH 7.4, containing 0.02 % sodium azide as Preservative and 50 % Glycerol.

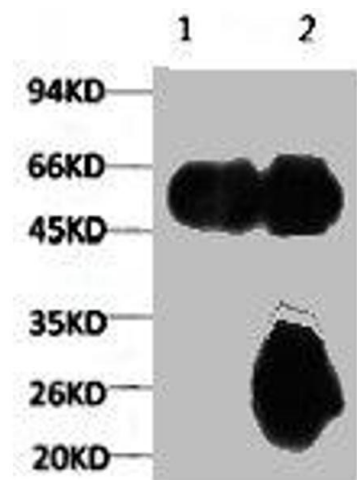
Preservative: Sodium azide

Precaution of Use: This product contains Sodium azide: a POISONOUS AND HAZARDOUS SUBSTANCE which should be handled by trained staff only.

Storage: -20 °C,-80 °C

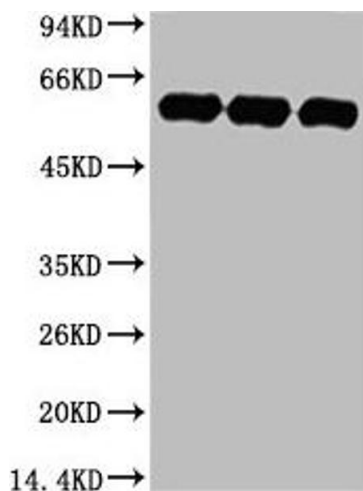
Storage Comment: Upon receipt, store at -20°C or -80°C. Avoid repeated freeze.

## Images



### Immunoprecipitation

**Image 1.** 1) Input: Mouse Brain Tissue Lysate 2) IP product: IP dilute 1:200



### Western Blotting

**Image 2.** Western blot analysis of 1) Hela, 2) Rat Brain Tissue, 3) Mouse Brain Tissue, diluted at 1:5000.