

Datasheet for ABIN7178692
anti-Luciferase antibody



[Go to Product page](#)

1 Image

Overview

Quantity:	100 µg
Target:	Luciferase
Reactivity:	Firefly
Host:	Mouse
Clonality:	Monoclonal
Conjugate:	This Luciferase antibody is un-conjugated
Application:	Western Blotting (WB), ELISA, Immunohistochemistry (IHC)

Product Details

Immunogen:	Recombinant Protein of Luciferase of Luciferase
Isotype:	IgG
Cross-Reactivity:	Firefly
Purification:	Affinity purified

Target Details

Target:	Luciferase
Abstract:	Luciferase Products
UniProt:	P08659

Application Details

Application Notes: Recommended dilution:WB:1:500-1:5000,IHC:1:50-1:500,

Restrictions: For Research Use only

Handling

Format: Liquid

Buffer: Liquid in PBS containing 50 % glycerol, 0.5 % BSA and 0.02 % sodium azide.

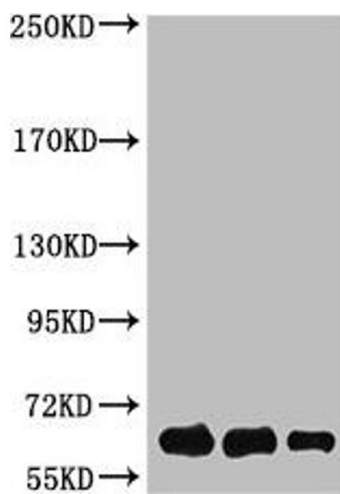
Preservative: Sodium azide

Precaution of Use: This product contains Sodium azide: a POISONOUS AND HAZARDOUS SUBSTANCE which should be handled by trained staff only.

Storage: -20 °C,-80 °C

Storage Comment: Upon receipt, store at -20°C or -80°C. Avoid repeated freeze.

Images



Western Blotting

Image 1. Western Blot analysis of Luciferase protein using antibody diluted at 1:1000