

Datasheet for ABIN7178921
anti-Lipocalin 2 antibody (AA 1-198)



[Go to Product page](#)

1 Image

Overview

Quantity:	100 µL
Target:	Lipocalin 2 (LCN2)
Binding Specificity:	AA 1-198
Reactivity:	Rat
Host:	Rabbit
Clonality:	Polyclonal
Conjugate:	This Lipocalin 2 antibody is un-conjugated
Application:	ELISA, Immunohistochemistry (IHC)

Product Details

Immunogen:	Recombinant Rat Lcn2 protein (1-198AA)
Isotype:	IgG
Cross-Reactivity:	Rat
Purification:	Antigen Affinity Purified

Target Details

Target:	Lipocalin 2 (LCN2)
Alternative Name:	Lcn2 (LCN2 Products)
Background:	Background: Iron-trafficking protein involved in multiple processes such as apoptosis, innate immunity and renal development (By similarity). Binds iron through association with 2,5-

Target Details

dihydroxybenzoic acid (2,5-DHBA), a siderophore that shares structural similarities with bacterial enterobactin, and delivers or removes iron from the cell, depending on the context. Iron-bound form (holo-24p3) is internalized following binding to the SLC22A17 (24p3R) receptor, leading to release of iron and subsequent increase of intracellular iron concentration. In contrast, association of the iron-free form (apo-24p3) with the SLC22A17 (24p3R) receptor is followed by association with an intracellular siderophore, iron chelation and iron transfer to the extracellular medium, thereby reducing intracellular iron concentration. Involved in apoptosis due to interleukin-3 (IL3) deprivation: iron-loaded form increases intracellular iron concentration without promoting apoptosis, while iron-free form decreases intracellular iron levels, inducing expression of the proapoptotic protein BCL2L11/BIM, resulting in apoptosis (By similarity). Involved in innate immunity, limits bacterial proliferation by sequestering iron bound to microbial siderophores, such as enterobactin. Can also bind siderophores from M.tuberculosis (By similarity).

Aliases: Lcn2 antibody, Neutrophil gelatinase-associated lipocalin antibody, NGAL antibody, Alpha-2-microglobulin-related protein antibody, Alpha-2U globulin-related protein antibody, Lipocalin 24p3 antibody, Lipocalin-2 antibody, Siderocalin LCN2 antibody, p25 antibody

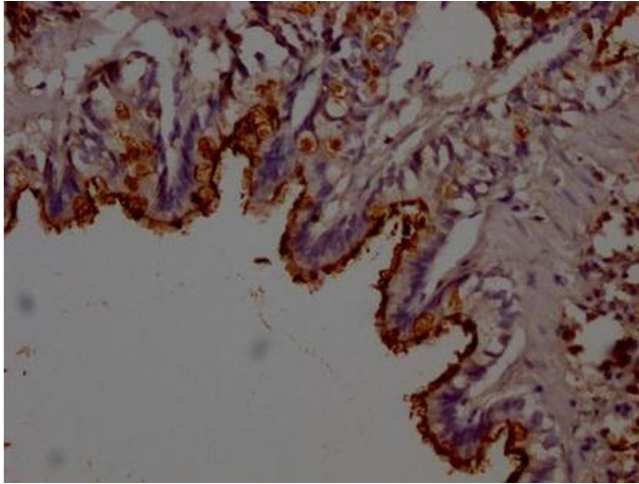
UniProt:	P30152
Pathways:	Cellular Response to Molecule of Bacterial Origin , Transition Metal Ion Homeostasis

Application Details

Application Notes:	Recommended dilution: IHC:1:100-1:500,
Restrictions:	For Research Use only

Handling

Format:	Liquid
Buffer:	Preservative: 0.03 % Proclin 300 Constituents: 50 % Glycerol, 0.01M PBS, PH 7.4
Preservative:	ProClin
Precaution of Use:	This product contains ProClin: a POISONOUS AND HAZARDOUS SUBSTANCE which should be handled by trained staff only.
Storage:	-20 °C,-80 °C
Storage Comment:	Upon receipt, store at -20°C or -80°C. Avoid repeated freeze.



Immunohistochemistry

Image 1. IHC image of ABIN7178921 diluted at 1:200 and staining in paraffin-embedded rat lung tissue performed on a Leica Bond™ system. After dewaxing and hydration, antigen retrieval was mediated by high pressure in a citrate buffer (pH 6.0). Section was blocked with 10 % normal goat serum 30 min at RT. Then primary antibody (1 % BSA) was incubated at 4 °C overnight. The primary is detected by a Goat anti-rabbit polymer IgG labeled by HRP and visualized using 0.05 % DAB.