



[Go to Product page](#)

Datasheet for ABIN7178961
anti-CHRM1 antibody (AA 210-366)

1 Image

Overview

Quantity:	100 µg
Target:	CHRM1
Binding Specificity:	AA 210-366
Reactivity:	Rat
Host:	Rabbit
Clonality:	Polyclonal
Conjugate:	This CHRM1 antibody is un-conjugated
Application:	Western Blotting (WB), ELISA

Product Details

Immunogen:	Recombinant Rat Muscarinic acetylcholine receptor M1 protein (210-366AA)
Isotype:	IgG
Cross-Reactivity:	Rat
Purification:	>95%, Protein G purified

Target Details

Target:	CHRM1
Alternative Name:	Chrm1 (CHRM1 Products)
Background:	Background: The muscarinic acetylcholine receptor mediates various cellular responses, including inhibition of adenylate cyclase, breakdown of phosphoinositides and modulation of

Target Details

potassium channels through the action of G proteins. Primary transducing effect is Pi turnover.

Aliases: Chrm1 antibody, Chrm-1Muscarinic acetylcholine receptor M1 antibody

UniProt: [P08482](#)

Pathways: [Synaptic Membrane](#)

Application Details

Application Notes: Recommended dilution: WB:1:500-1:5000,

Restrictions: For Research Use only

Handling

Format: Liquid

Buffer: Preservative: 0.03 % Proclin 300
Constituents: 50 % Glycerol, 0.01M PBS, PH 7.4

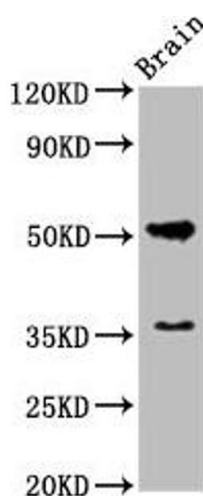
Preservative: ProClin

Precaution of Use: This product contains ProClin: a POISONOUS AND HAZARDOUS SUBSTANCE which should be handled by trained staff only.

Storage: -20 °C,-80 °C

Storage Comment: Upon receipt, store at -20°C or -80°C. Avoid repeated freeze.

Images



Western Blotting

Image 1. Western Blot Positive WB detected in: Rat brain tissue All lanes: Chrm1 antibody at 5.5 µg/mL Secondary Goat polyclonal to rabbit IgG at 1/50000 dilution Predicted band size: 52 kDa Observed band size: 52 kDa