

Datasheet for ABIN7178989  
**anti-NUCB2 antibody (AA 194-420)**[Go to Product page](#)

## 1 Image

## Overview

Quantity:	100 µL
Target:	NUCB2
Binding Specificity:	AA 194-420
Reactivity:	Rat
Host:	Rabbit
Clonality:	Polyclonal
Conjugate:	This NUCB2 antibody is un-conjugated
Application:	Western Blotting (WB), ELISA

## Product Details

Immunogen:	Recombinant Rat Nucb2 protein (194-420AA)
Isotype:	IgG
Cross-Reactivity:	Human, Rat
Purification:	>95%, Protein G purified

## Target Details

Target:	NUCB2
Alternative Name:	Nucb2 ( <a href="#">NUCB2 Products</a> )
Background:	Background: Calcium-binding protein. May have a role in calcium homeostasis (By similarity). {ECO:0000250}., Nesfatin-1: Anorexigenic peptide, seems to play an important role in

## Target Details

hypothalamic pathways regulating food intake and energy homeostasis, acting in a leptin-independent manner. May also exert hypertensive roles and modulate blood pressure through directly acting on peripheral arterial resistance.

Aliases: Nucb2 antibody, Nefa antibody, Nucleobindin-2 antibody, DNA-binding protein NEFA antibody, Prepronesfatin) [Cleaved into: Nesfatin-1] antibody

UniProt: [Q9J185](#)

## Application Details

Application Notes: Recommended dilution: WB:1:1000-1:5000,

Restrictions: For Research Use only

## Handling

Format: Liquid

Buffer: Preservative: 0.03 % Proclin 300  
Constituents: 50 % Glycerol, 0.01M PBS, PH 7.4

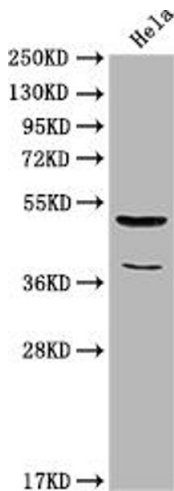
Preservative: ProClin

Precaution of Use: This product contains ProClin: a POISONOUS AND HAZARDOUS SUBSTANCE which should be handled by trained staff only.

Storage: -20 °C,-80 °C

Storage Comment: Upon receipt, store at -20°C or -80°C. Avoid repeated freeze.

## Images



### Western Blotting

**Image 1.** Western Blot Positive WB detected in: HeLa whole cell lysate All lanes: Nucb2 antibody at 1:2000 Secondary Goat polyclonal to rabbit IgG at 1/50000 dilution Predicted band size: 51 kDa Observed band size: 51 kDa