



[Go to Product page](#)

Datasheet for ABIN7179021

anti-Prolactin antibody (AA 30-226)

1 Image

Overview

Quantity:	100 µg
Target:	Prolactin (PRL)
Binding Specificity:	AA 30-226
Reactivity:	Rat
Host:	Rabbit
Clonality:	Polyclonal
Conjugate:	This Prolactin antibody is un-conjugated
Application:	ELISA, Immunohistochemistry (IHC)

Product Details

Immunogen:	Recombinant Rat Prolactin protein (30-226AA)
Isotype:	IgG
Cross-Reactivity:	Rat
Purification:	>95%, Protein G purified

Target Details

Target:	Prolactin (PRL)
Alternative Name:	PrI (PRL Products)
Background:	Background: Prolactin acts primarily on the mammary gland by promoting lactation. Aliases: PrI antibody, Prolactin antibody, PRL antibody

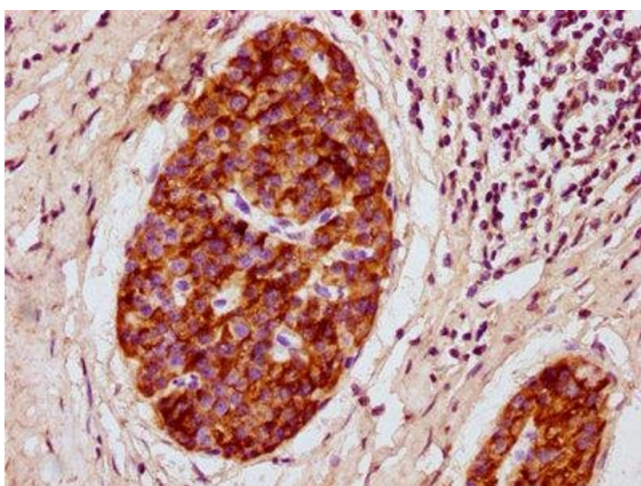
Target Details

UniProt:	P01237
Pathways:	JAK-STAT Signaling , Peptide Hormone Metabolism , Response to Growth Hormone Stimulus , Protein targeting to Nucleus

Application Details

Application Notes:	Recommended dilution: IHC:1:200-1:500,
Restrictions:	For Research Use only
Handling	
Format:	Liquid
Buffer:	Preservative: 0.03 % Proclin 300 Constituents: 50 % Glycerol, 0.01M PBS, pH 7.4
Preservative:	ProClin
Precaution of Use:	This product contains ProClin: a POISONOUS AND HAZARDOUS SUBSTANCE which should be handled by trained staff only.
Storage:	-20 °C,-80 °C
Storage Comment:	Upon receipt, store at -20°C or -80°C. Avoid repeated freeze.

Images



Immunohistochemistry

Image 1. IHC image of ABIN7179021 diluted at 1:300 and staining in paraffin-embedded human pancreatic cancer performed on a Leica Bond™ system. After dewaxing and hydration, antigen retrieval was mediated by high pressure in a citrate buffer (pH 6.0). Section was blocked with 10 % normal goat serum 30 min at RT. Then primary antibody (1 % BSA) was incubated at 4 °C overnight. The primary is detected by a biotinylated secondary antibody and visualized using an HRP conjugated SP system.