

Datasheet for ABIN7179061
anti-Renin antibody (AA 65-264)

2 Images

[Go to Product page](#)

Overview

Quantity:	100 µL
Target:	Renin (REN)
Binding Specificity:	AA 65-264
Reactivity:	Rat
Host:	Rabbit
Clonality:	Polyclonal
Conjugate:	This Renin antibody is un-conjugated
Application:	Western Blotting (WB), ELISA, Immunohistochemistry (IHC)

Product Details

Immunogen:	Recombinant Rat Ren1 protein (65-264AA)
Isotype:	IgG
Cross-Reactivity:	Rat
Purification:	>95%, Antigen Affinity purified & Affinity purified

Target Details

Target:	Renin (REN)
Alternative Name:	Ren1 (REN Products)
Background:	Background: Renin is a highly specific endopeptidase, whose only known function is to generate angiotensin I from angiotensinogen in the plasma, initiating a cascade of reactions

Target Details

that produce an elevation of blood pressure and increased sodium retention by the kidney.

Aliases: Ren1 antibody, Ren antibody, Renin antibody, EC 3.4.23.15 antibody, Angiotensinogenase antibody

UniProt: [P08424](#)

Pathways: [ACE Inhibitor Pathway](#), [Peptide Hormone Metabolism](#), [Regulation of Systemic Arterial Blood Pressure by Hormones](#), [Feeding Behaviour](#)

Application Details

Application Notes: Recommended dilution: WB:1:1000-1:5000, IHC:1:100-1:500,

Restrictions: For Research Use only

Handling

Format: Liquid

Buffer: Preservative: 0.03 % Proclin 300
Constituents: 50 % Glycerol, 0.01M PBS, PH 7.4

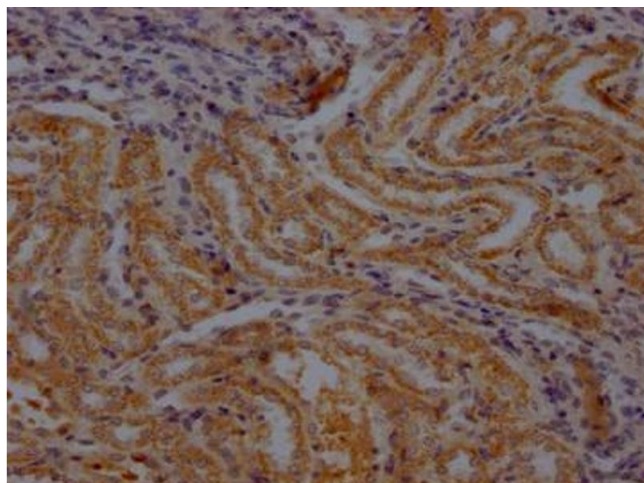
Preservative: ProClin

Precaution of Use: This product contains ProClin: a POISONOUS AND HAZARDOUS SUBSTANCE which should be handled by trained staff only.

Storage: -20 °C,-80 °C

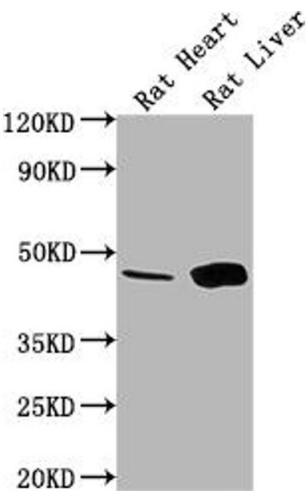
Storage Comment: Upon receipt, store at -20°C or -80°C. Avoid repeated freeze.

Images



Immunohistochemistry

Image 1. IHC image of ABIN7179061 diluted at 1:100 and staining in paraffin-embedded rat kidney tissue performed on a Leica Bond™ system. After dewaxing and hydration, antigen retrieval was mediated by high pressure in a citrate buffer (pH 6.0). Section was blocked with 10 % normal goat serum 30 min at RT. Then primary antibody (1 % BSA) was incubated at 4 °C overnight. The primary is detected by a Goat anti-rabbit polymer IgG labeled by HRP and visualized



using 0.05 % DAB.

Western Blotting

Image 2. Western Blot Positive WB detected in: Rat Heart tissue, Rat Liver tissue All lanes: Ren1 antibody at 1:1000 Secondary Goat polyclonal to rabbit IgG at 1/50000 dilution Predicted band size: 45 kDa Observed band size: 45 kDa