



Datasheet for ABIN7179529

## anti-Beta-Lactamase inhibitors antibody (AA 37-201)



[Go to Product page](#)

### 1 Image

#### Overview

Quantity:	100 µg
Target:	Beta-Lactamase inhibitors (BLI)
Binding Specificity:	AA 37-201
Reactivity:	Streptomyces clavuligerus
Host:	Rabbit
Clonality:	Polyclonal
Conjugate:	This Beta-Lactamase inhibitors antibody is un-conjugated
Application:	ELISA, Western Blotting (WB)

#### Product Details

Immunogen:	Recombinant Streptomyces clavuligerus Beta-lactamase inhibitory protein (37-201AA)
Isotype:	IgG
Cross-Reactivity:	Streptomyces clavuligerus
Purification:	>95%, Protein G purified

#### Target Details

Target:	Beta-Lactamase inhibitors (BLI)
Alternative Name:	Beta-lactamase inhibitory protein
Background:	Background: Inhibits a wide variety of beta lactamases. Aliases: Beta-lactamase inhibitory protein antibody, BLIP antibody

## Target Details

UniProt: [P35804](#)

## Application Details

Application Notes: Recommended dilution: WB:1:500-1:5000,

Restrictions: For Research Use only

## Handling

Format: Liquid

Buffer: Preservative: 0.03 % Proclin 300  
Constituents: 50 % Glycerol, 0.01M PBS, pH 7.4

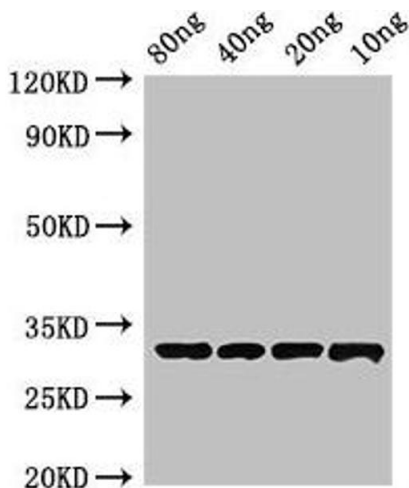
Preservative: ProClin

Precaution of Use: This product contains ProClin: a POISONOUS AND HAZARDOUS SUBSTANCE which should be handled by trained staff only.

Storage: -20 °C,-80 °C

Storage Comment: Upon receipt, store at -20°C or -80°C. Avoid repeated freeze.

## Images



### Western Blotting

**Image 1.** Western Blot Positive WB detected in Recombinant protein All lanes: Beta-lactamase inhibitory protein antibody at 4 µg/mL Secondary Goat polyclonal to rabbit IgG at 1/50000 dilution Predicted band size: 33 kDa Observed band size: 33 kDa