



[Go to Product page](#)

Datasheet for ABIN7179575  
**anti-CHRNA1 antibody (AA 25-234)**

1 Image

### Overview

Quantity:	100 µg
Target:	CHRNA1
Binding Specificity:	AA 25-234
Reactivity:	Torpedo californica
Host:	Rabbit
Clonality:	Polyclonal
Conjugate:	This CHRNA1 antibody is un-conjugated
Application:	ELISA, Western Blotting (WB)

### Product Details

Immunogen:	Recombinant Torpedo californica Acetylcholine receptor subunit alpha protein (25-234AA)
Isotype:	IgG
Cross-Reactivity:	Torpedo californica
Purification:	>95%, Protein G purified

### Target Details

Target:	CHRNA1
Alternative Name:	CHRNA1 ( <a href="#">CHRNA1 Products</a> )
Background:	Background: After binding acetylcholine, the AChR responds by an extensive change in conformation that affects all subunits and leads to opening of an ion-conducting channel

## Target Details

across the plasma membrane.

Aliases: CHRNA1Acetylcholine receptor subunit alpha antibody

UniProt: [P02710](#)

Pathways: [Skeletal Muscle Fiber Development](#)

## Application Details

Application Notes: Recommended dilution: WB:1:1000-1:5000,

Restrictions: For Research Use only

## Handling

Format: Liquid

Buffer: Preservative: 0.03 % Proclin 300  
Constituents: 50 % Glycerol, 0.01M PBS, PH 7.4

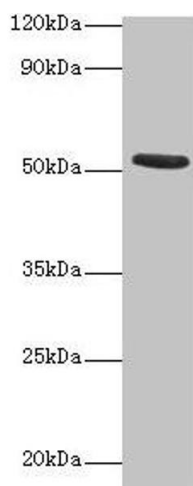
Preservative: ProClin

Precaution of Use: This product contains ProClin: a POISONOUS AND HAZARDOUS SUBSTANCE which should be handled by trained staff only.

Storage: -20 °C,-80 °C

Storage Comment: Upon receipt, store at -20°C or -80°C. Avoid repeated freeze.

## Images



### Western Blotting

**Image 1.** Western blot All lanes: CHRNA1 antibody at 2  $\mu$ g/mL + Recombinant Acetylcholine receptor subunit alpha protein 0.1  $\mu$ g Secondary Goat polyclonal to rabbit IgG at 1/15000 dilution Predicted band size: 53 kDa Observed band size: 53 kDa