

Datasheet for ABIN7179738  
**anti-egfra antibody (AA 21-389)**[Go to Product page](#)

## 2 Images

## Overview

Quantity:	100 µg
Target:	egfra (EGFRA)
Binding Specificity:	AA 21-389
Reactivity:	Zebrafish (Danio rerio)
Host:	Rabbit
Clonality:	Polyclonal
Conjugate:	This egfra antibody is un-conjugated
Application:	ELISA, Western Blotting (WB)

## Product Details

Immunogen:	Recombinant Zebrafish Epidermal growth factor receptor protein (21-389AA)
Isotype:	IgG
Cross-Reactivity:	Zebrafish (Danio rerio)
Purification:	>95%, Protein G purified

## Target Details

Target:	egfra (EGFRA)
Alternative Name:	egfra ( <a href="#">EGFRA Products</a> )
Background:	Background: blood vessel lumenization Aliases: 0

## Target Details

UniProt: [F1RA48](#)

## Application Details

Application Notes: Recommended dilution: WB:1:500-1:5000,

Restrictions: For Research Use only

## Handling

Format: Liquid

Buffer: Preservative: 0.03 % Proclin 300  
Constituents: 50 % Glycerol, 0.01M PBS, pH 7.4

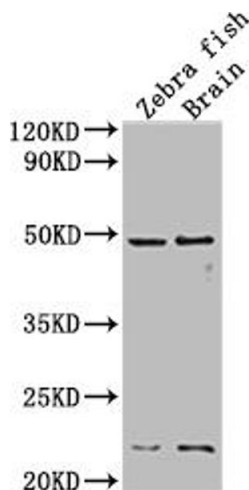
Preservative: ProClin

Precaution of Use: This product contains ProClin: a POISONOUS AND HAZARDOUS SUBSTANCE which should be handled by trained staff only.

Storage: -20 °C,-80 °C

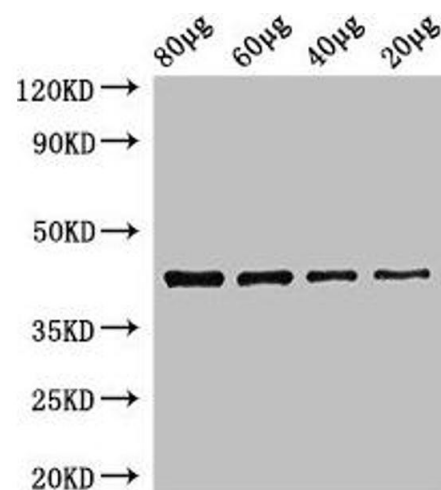
Storage Comment: Upon receipt, store at -20°C or -80°C. Avoid repeated freeze.

## Images



### Western Blotting

**Image 1.** Western Blot Positive WB detected in: Zebra fish, Zebra fish brain tissue All lanes:egfra antibody at 1:2000  
Secondary Goat polyclonal to rabbit IgG at 1/50000 dilution  
Predicted band size: 43 kDa Observed band size: 43 kDa



Western Blotting

**Image 2.** Western Blot Positive WB detected in: Zebrafish tissue 80 µg, 60 µg, 40 µg, 20 µg All lanes: egfra antibody at 3.5 µg/mL Secondary Goat polyclonal to rabbit IgG at 1/50000 dilution Predicted band size: 43 kDa Observed band size: 43 kDa