

Datasheet for ABIN7179878
anti-TAL1 antibody (AA 1-324)[Go to Product page](#)

1 Image

Overview

Quantity:	100 µg
Target:	TAL1
Binding Specificity:	AA 1-324
Reactivity:	Zebrafish (Danio rerio)
Host:	Rabbit
Clonality:	Polyclonal
Conjugate:	This TAL1 antibody is un-conjugated
Application:	Western Blotting (WB), ELISA

Product Details

Immunogen:	Recombinant Zebrafish T-cell acute lymphocytic leukemia protein 1 homolog protein (1-324AA)
Isotype:	IgG
Cross-Reactivity:	Zebrafish (Danio rerio)
Purification:	>95%, Protein G purified

Target Details

Target:	TAL1
Alternative Name:	tal1 (TAL1 Products)
Background:	Background: Transcription factor that plays a pivotal role in hemopoietic and endothelial development, acting synergistically with lmo2 and downstream of c/ebf. Specifies mesodermal

Target Details

precursors to a hemangioblast cell fate. Hemangioblasts are bipotential precursors of blood and endothelium, and in the absence of hemopoietic induction cues such as gata1, tal1/scl-
lmo2-induced hemangioblasts differentiate into endothelial cells. Isoform alpha and isoform beta are redundant for the initiation of primitive hemopoiesis but have distinct roles in the regulation of primitive erythroid differentiation and definitive hemopoietic stem cell specification, most likely due to differences in expression levels. Specification of definitive hemopoietic stem cells requires isoform beta. DNA binding is required for erythroid maturation, but not for its other hemopoietic functions. Endothelial roles include development of the dorsal aorta, the site of definitive hemopoiesis in the embryo. Required for angiogenesis but not angioblast specification. Has an additional role in endocardium formation during heart development. May play a role in central nervous system development.

Aliases: tal1 antibody, scl antibody, tal-1 antibody, si:ch211-135j1.3 antibody, T-cell acute lymphocytic leukemia protein 1 homolog antibody, TAL-1 antibody, Stem cell protein antibody, zSCL antibody

UniProt: [O93507](#)

Pathways: [Stem Cell Maintenance](#)

Application Details

Application Notes: Recommended dilution: WB:1:500-1:5000,

Restrictions: For Research Use only

Handling

Format: Liquid

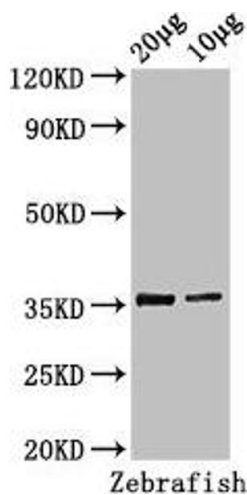
Buffer: Preservative: 0.03 % Proclin 300
Constituents: 50 % Glycerol, 0.01M PBS, pH 7.4

Preservative: ProClin

Precaution of Use: This product contains ProClin: a POISONOUS AND HAZARDOUS SUBSTANCE which should be handled by trained staff only.

Storage: -20 °C,-80 °C

Storage Comment: Upon receipt, store at -20°C or -80°C. Avoid repeated freeze.



Western Blotting

Image 1. Western Blot Positive WB detected in: Zebrafish tissue 20 µg, 10 µg All lanes: tal1 antibody at 3 µg/mL Secondary Goat polyclonal to rabbit IgG at 1/50000 dilution Predicted band size: 36, 23 kDa Observed band size: 36 kDa