



[Go to Product page](#)

Datasheet for ABIN7179886

anti-tuba8l2 antibody (AA 1-449)

1 Image

Overview

Quantity:	100 µg
Target:	tuba8l2 (TUBA8L2)
Binding Specificity:	AA 1-449
Reactivity:	Zebrafish (Danio rerio)
Host:	Rabbit
Clonality:	Polyclonal
Conjugate:	This tuba8l2 antibody is un-conjugated
Application:	ELISA, Western Blotting (WB)

Product Details

Immunogen:	Recombinant Zebrafish Tubulin alpha chain protein (1-449AA)
Isotype:	IgG
Cross-Reactivity:	Zebrafish (Danio rerio)
Purification:	>95%, Protein G purified

Target Details

Target:	tuba8l2 (TUBA8L2)
Alternative Name:	tuba8l2 (TUBA8L2 Products)
Background:	Background: Tubulin is the major constituent of microtubules. It binds two moles of GTP, one at an exchangeable site on the beta chain and one at a non-exchangeable site on the alpha chain.

Target Details

Aliases: 0

UniProt: [Q6PC95](#)

Application Details

Application Notes: Recommended dilution: WB:1:1000-1:5000,

Restrictions: For Research Use only

Handling

Format: Liquid

Buffer: Preservative: 0.03 % Proclin 300
Constituents: 50 % Glycerol, 0.01M PBS, pH 7.4

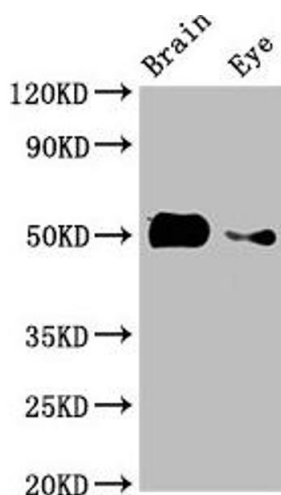
Preservative: ProClin

Precaution of Use: This product contains ProClin: a POISONOUS AND HAZARDOUS SUBSTANCE which should be handled by trained staff only.

Storage: -20 °C,-80 °C

Storage Comment: Upon receipt, store at -20°C or -80°C. Avoid repeated freeze.

Images



Western Blotting

Image 1. Western Blot Positive WB detected in: Zebrafish brain tissue, Zebrafish eye tissue All lanes: tuba8l2 antibody at 3 µg/mL Secondary Goat polyclonal to rabbit IgG at 1/50000 dilution Predicted band size: 51 kDa Observed band size: 51 kDa