

Datasheet for ABIN7179965
anti-eIF4EBP1 antibody (Ser65)



[Go to Product page](#)

2 Images

Overview

Quantity:	100 µL
Target:	eIF4EBP1 (EIF4EBP1)
Binding Specificity:	Ser65
Reactivity:	Human
Host:	Rabbit
Clonality:	Polyclonal
Conjugate:	This eIF4EBP1 antibody is un-conjugated
Application:	Western Blotting (WB), Immunohistochemistry (IHC), ELISA

Product Details

Immunogen:	Synthesized non-phosphopeptide derived from Human 4E-BP1 around the phosphorylation site of serine 65 (R-N-S(p)-P-V).
Isotype:	IgG
Cross-Reactivity:	Human, Mouse, Rat
Purification:	The antibody was affinity-purified from rabbit antiserum by affinity-chromatography using epitope-specific immunogen.

Target Details

Target:	eIF4EBP1 (EIF4EBP1)
Alternative Name:	EIF4EBP1 (EIF4EBP1 Products)

Target Details

Background: Background: Regulates eIF4E activity by preventing its assembly into the eIF4F complex: hypophosphorylated form competes with EIF4G1/EIF4G3 and strongly binds to EIF4E, leading to repress translation. Mediates the regulation of protein translation by hormones, growth factors and other stimuli that signal through the MAP kinase and mTORC1 pathways.

Anne-Claude Gingras, Genes & Dev., Jun 1999, 13: 1422.

Guangming Liu, J. Biol. Chem., Mar 2002, 277: 8810 - 8816.

Ya-Ping Jiang, J. Biol. Chem., Mar 2001, 276: 10943 - 10951.

Aliases: 4E-BP1 antibody, 4EBP1 antibody, 4EBP1_HUMAN antibody, BP 1 antibody, eIF4E binding protein 1 antibody, eIF4E-binding protein 1 antibody, Eif4ebp1 antibody, Eukaryotic translation initiation factor 4E-binding protein 1 antibody, PHAS-I antibody, PHASI antibody, Phosphorylated heat- and acid-stable protein regulated by insulin 1 antibody

UniProt: [Q13541](#)

Pathways: [MAPK Signaling](#), [PI3K-Akt Signaling](#), [RTK Signaling](#), [AMPK Signaling](#), [Regulation of Cell Size](#), [BCR Signaling](#)

Application Details

Application Notes: WB:1:500-1:3000, IHC:1:50-1:100,

Restrictions: For Research Use only

Handling

Format: Liquid

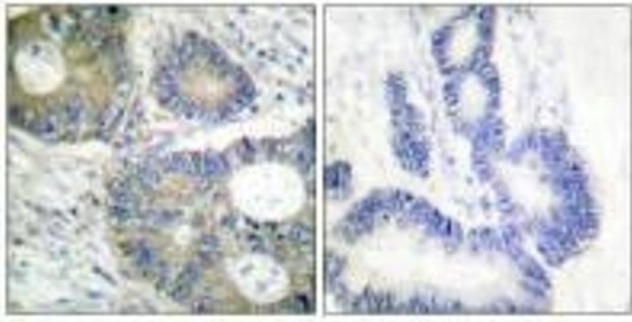
Buffer: Rabbit IgG in phosphate buffered saline (without Mg²⁺ and Ca²⁺), pH 7.4, 150 mM NaCl, 0.02 % sodium azide and 50 % glycerol.

Preservative: Sodium azide

Precaution of Use: This product contains Sodium azide: a POISONOUS AND HAZARDOUS SUBSTANCE which should be handled by trained staff only.

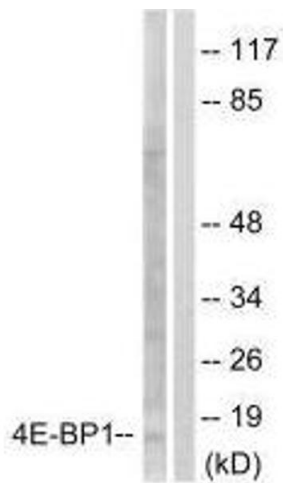
Storage: -20 °C,-80 °C

Storage Comment: Upon receipt, store at -20°C or -80°C. Avoid repeated freeze.



Immunohistochemistry

Image 1. Immunohistochemical analysis of paraffin-embedded human colon carcinoma tissue using 4E-BP1 (Ab-64) antibody.



Western Blotting

Image 2. Western blot analysis of extracts from Jurkat cells, treated with Insulin (0.01U/mL, 15 mins), using 4E-BP1 (Ab-64) antibody.