



[Go to Product page](#)

Datasheet for ABIN7179975
anti-APLP2 antibody (Tyr755)

1 Image

Overview

Quantity:	100 µL
Target:	APLP2
Binding Specificity:	Tyr755
Reactivity:	Human
Host:	Rabbit
Clonality:	Polyclonal
Conjugate:	This APLP2 antibody is un-conjugated
Application:	Western Blotting (WB), ELISA

Product Details

Immunogen:	Synthesized non-phosphopeptide derived from Human APLP2 around the phosphorylation site of tyrosine 755 (P-T-Y(p)-K-Y).
Isotype:	IgG
Cross-Reactivity:	Human, Mouse
Purification:	The antibody was affinity-purified from rabbit antiserum by affinity-chromatography using epitope-specific immunogen.

Target Details

Target:	APLP2
Alternative Name:	APLP2 (APLP2 Products)

Target Details

Background: Background: May play a role in the regulation of hemostasis. The soluble form may have inhibitory properties towards coagulation factors. May interact with cellular G-protein signaling pathways. May bind to the DNA 5'-GTCACATG-3'(CDEI box). Inhibits trypsin, chymotrypsin, plasmin, factor XIA and plasma and glandular kallikrein. Modulates the Cu/Zn nitric oxide-catalyzed autodegradation of GPC1 heparan sulfate side chains in fibroblasts By similarity.

Sprecher C.A., Biochemistry 32:4481-4486(1993).

Wasco W., Nat. Genet. 5:95-99(1993).

von der Kammer H., DNA Cell Biol. 13:1137-1143(1994).

Aliases: amyloid beta (A4) precursor like protein 2 antibody, Amyloid like protein 2 antibody, Amyloid precursor protein homolog HSD 2 antibody, amyloid precursor protein homolog HSD2 antibody, Amyloid protein homolog antibody, Amyloid-like protein 2 antibody, APLP-2 antibody, Aplp2 antibody, APLP2_HUMAN antibody, APPH antibody, APPL2 antibody, CDEBP antibody, CDEI box binding protein antibody, CDEI box-binding protein antibody

UniProt: [Q06481](#)

Pathways: [EGFR Signaling Pathway](#), [Transition Metal Ion Homeostasis](#), [Feeding Behaviour](#)

Application Details

Application Notes: WB:1:500-1:3000,

Restrictions: For Research Use only

Handling

Format: Liquid

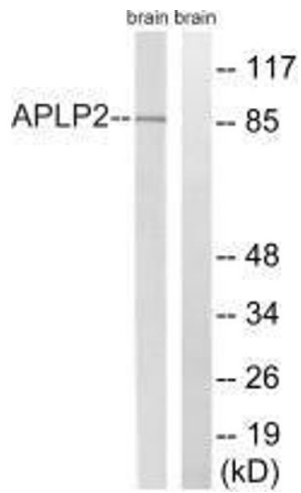
Buffer: Rabbit IgG in phosphate buffered saline (without Mg²⁺ and Ca²⁺), pH 7.4, 150 mM NaCl, 0.02 % sodium azide and 50 % glycerol.

Preservative: Sodium azide

Precaution of Use: This product contains Sodium azide: a POISONOUS AND HAZARDOUS SUBSTANCE which should be handled by trained staff only.

Storage: -20 °C,-80 °C

Storage Comment: Upon receipt, store at -20°C or -80°C. Avoid repeated freeze.



Western Blotting

Image 1. Western blot analysis of extracts from rat brain cells, using APLP2 (Ab-755) antibody.