

Datasheet for ABIN7179981
anti-BCL6 antibody (Ser333)



[Go to Product page](#)

1 Image

Overview

Quantity:	100 µL
Target:	BCL6
Binding Specificity:	Ser333
Reactivity:	Human
Host:	Rabbit
Clonality:	Polyclonal
Conjugate:	This BCL6 antibody is un-conjugated
Application:	Western Blotting (WB), ELISA

Product Details

Immunogen:	Synthesized non-phosphopeptide derived from Human Bcl-6 around the phosphorylation site of serine 333 (P-Q-S(p)-P-Q).
Isotype:	IgG
Cross-Reactivity:	Human, Mouse
Purification:	The antibody was affinity-purified from rabbit antiserum by affinity-chromatography using epitope-specific immunogen.

Target Details

Target:	BCL6
Alternative Name:	BCL6 (BCL6 Products)

Background:

Background: Transcriptional repressor mainly required for germinal center (GC) formation and antibody affinity maturation which has different mechanisms of action specific to the lineage and biological functions. Forms complexes with different corepressors and histone deacetylases to repress the transcriptional expression of different subsets of target genes. Represses its target genes by binding directly to the DNA sequence 5'-TTCCTAGAA-3' (BCL6-binding site) or indirectly by repressing the transcriptional activity of transcription factors. In GC B-cells, represses genes that function in differentiation, inflammation, apoptosis and cell cycle control, also autoregulates its transcriptional expression and up-regulates, indirectly, the expression of some genes important for GC reactions, such as AICDA, through the repression of microRNAs expression, like miR155. An important function is to allow GC B-cells to proliferate very rapidly in response to T-cell dependent antigens and tolerate the physiological DNA breaks required for immunoglobulin class switch recombination and somatic hypermutation without inducing a p53/TP53-dependent apoptotic response. In follicular helper CD4+ T-cells (T(FH) cells), promotes the expression of T(FH)-related genes but inhibits the differentiation of T(H)1, T(H)2 and T(H)17 cells. Also required for the establishment and maintenance of immunological memory for both T- and B-cells. Suppresses macrophage proliferation through competition with STAT5 for STAT-binding motifs binding on certain target genes, such as CCL2 and CCND2. In response to genotoxic stress, controls cell cycle arrest in GC B-cells in both p53/TP53-dependent and -independent manners. Besides, also controls neurogenesis through the alteration of the composition of NOTCH-dependent transcriptional complexes at selective NOTCH targets, such as HES5, including the recruitment of the deacetylase SIRT1 and resulting in an epigenetic silencing leading to neuronal differentiation.

Kerckaert J.-P., Nat. Genet. 5:66-70(1993).

Ye B.H., Science 262:747-750(1993).

Miki T., Blood 83:26-32(1994).

Aliases: B cell CLL/lymphoma 6 antibody, B cell lymphoma 6 protein antibody, B-cell lymphoma 5 protein antibody, B-cell lymphoma 6 protein antibody, BCL 5 antibody, Bcl 6 antibody, BCL-5 antibody, BCL-6 antibody, BCL5 antibody, BCL6 antibody, BCL6_HUMAN antibody, BCL6A antibody, cys his2 zinc finger transcription factor antibody, cys-his2 zinc finger transcription factor antibody, LAZ 3 antibody, LAZ 3 protein antibody, LAZ3 antibody, Lymphoma Associated Zinc Finger Gene On Chromosome 3 (LAZ3) antibody, Lymphoma associated zinc finger gene on chromosome 3 antibody, Protein LAZ-3 antibody, ZBTB 27 antibody, ZBTB27 antibody, Zinc finger and BTB domain containing protein 27 antibody, Zinc finger and BTB domain-containing protein 27 (ZBTB27) antibody, Zinc finger and BTB domain-containing protein 27 antibody, Zinc Finger Protein 51 (ZNF51) antibody, Zinc finger protein 51 antibody, zinc finger transcription

Target Details

	factor BCL6S antibody, ZNF 51 antibody, ZNF51 antibody
UniProt:	P41182
Pathways:	Chromatin Binding, Regulation of Leukocyte Mediated Immunity, Production of Molecular Mediator of Immune Response, Protein targeting to Nucleus

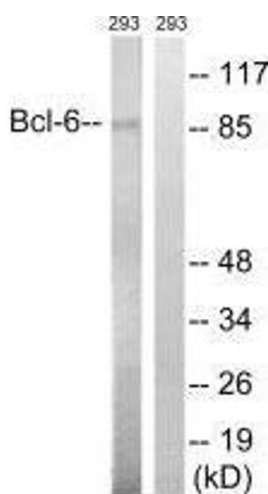
Application Details

Application Notes:	WB:1:500-1:3000,
Restrictions:	For Research Use only

Handling

Format:	Liquid
Buffer:	Rabbit IgG in phosphate buffered saline (without Mg2+ and Ca2+), pH 7.4, 150 mM NaCl, 0.02 % sodium azide and 50 % glycerol.
Preservative:	Sodium azide
Precaution of Use:	This product contains Sodium azide: a POISONOUS AND HAZARDOUS SUBSTANCE which should be handled by trained staff only.
Storage:	-20 °C,-80 °C
Storage Comment:	Upon receipt, store at -20°C or -80°C. Avoid repeated freeze.

Images



Western Blotting

Image 1. Western blot analysis of extracts from 293 cells, using Bcl-6 (Ab-333) antibody.