

Datasheet for ABIN7179992
anti-Claudin 1 antibody (Tyr210)

2 Images

[Go to Product page](#)

Overview

Quantity:	100 µL
Target:	Claudin 1 (CLDN1)
Binding Specificity:	Tyr210
Reactivity:	Human
Host:	Rabbit
Clonality:	Polyclonal
Conjugate:	This Claudin 1 antibody is un-conjugated
Application:	Western Blotting (WB), ELISA

Product Details

Immunogen:	Synthesized non-phosphopeptide derived from Human Claudin 1 around the phosphorylation site of tyrosine 210 (G-K-D-Y(p)-V).
Isotype:	IgG
Cross-Reactivity:	Human, Mouse
Purification:	The antibody was affinity-purified from rabbit antiserum by affinity-chromatography using epitope-specific immunogen.

Target Details

Target:	Claudin 1 (CLDN1)
Alternative Name:	CLDN1 (CLDN1 Products)

Target Details

Background:	<p>Background: Claudins function as major constituents of the tight junction complexes that regulate the permeability of epithelia. While some claudin family members play essential roles in the formation of impermeable barriers, others mediate the permeability to ions and small molecules. Often, several claudin family members are coexpressed and interact with each other, and this determines the overall permeability. CLDN1 is required to prevent the paracellular diffusion of small molecules through tight junctions in the epidermis and is required for the normal barrier function of the skin. Required for normal water homeostasis and to prevent excessive water loss through the skin, probably via an indirect effect on the expression levels of other proteins, since CLDN1 itself seems to be dispensable for water barrier formation in keratinocyte tight junctions (). CLDN1 acts as a coreceptor for HCV entry into hepatic cells.</p> <p>Swisshelm K.L., Gene 226:285-295(1999).</p> <p>Halford S., Cytogenet. Cell Genet. 88:217-217(2000).</p> <p>Kraemer F., Hum. Genet. 107:249-256(2000).</p> <p>Aliases: Claudin-1 antibody, Claudin1 antibody, CLD 1 antibody, CLD1 antibody, CLD1_HUMAN antibody, CLDN 1 antibody, Cldn1 antibody, ILVASC antibody, SEMP 1 antibody, SEMP1 antibody, Senescence associated epithelial membrane protein 1 antibody, Senescence associated epithelial membrane protein antibody, Senescence-associated epithelial membrane protein antibody</p>
-------------	--

UniProt:	O95832
----------	------------------------

Pathways:	Cell-Cell Junction Organization , Hepatitis C
-----------	---

Application Details

Application Notes:	WB:1:500-1:3000,
Restrictions:	For Research Use only

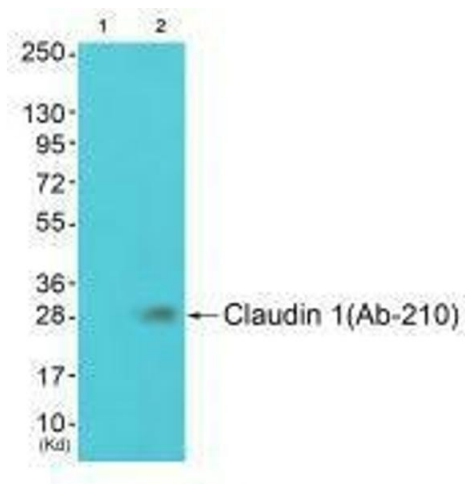
Handling

Format:	Liquid
Buffer:	Rabbit IgG in phosphate buffered saline (without Mg ²⁺ and Ca ²⁺), pH 7.4, 150 mM NaCl, 0.02 % sodium azide and 50 % glycerol.
Preservative:	Sodium azide
Precaution of Use:	This product contains Sodium azide: a POISONOUS AND HAZARDOUS SUBSTANCE which

Handling

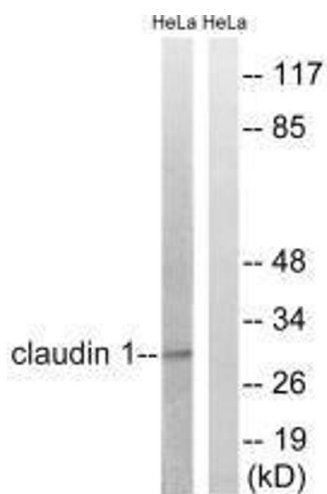
	should be handled by trained staff only.
Storage:	-20 °C,-80 °C
Storage Comment:	Upon receipt, store at -20°C or -80°C. Avoid repeated freeze.

Images



Western Blotting

Image 1. Western blot analysis of extracts from JK cells (Lane 2), using Claudin 1 (Ab-210) antibody. The lane on the left is treated with synthesized peptide.



Western Blotting

Image 2. Western blot analysis of extracts from HeLa cells, treated with Hu (2nM, 24hours), using Claudin 1 (Ab-210) antibody.