



[Go to Product page](#)

Datasheet for ABIN7179993

## anti-Claudin 7 antibody (Tyr210)

### 3 Images

#### Overview

Quantity:	100 µL
Target:	Claudin 7 (CLDN7)
Binding Specificity:	Tyr210
Reactivity:	Human
Host:	Rabbit
Clonality:	Polyclonal
Conjugate:	This Claudin 7 antibody is un-conjugated
Application:	Western Blotting (WB), ELISA, Immunohistochemistry (IHC)

#### Product Details

Immunogen:	Synthesized non-phosphopeptide derived from Human Claudin 7 around the phosphorylation site of tyrosine 210 (S-K-E-Y(p)-V).
Isotype:	IgG
Cross-Reactivity:	Human, Mouse
Purification:	The antibody was affinity-purified from rabbit antiserum by affinity-chromatography using epitope-specific immunogen.

#### Target Details

Target:	Claudin 7 (CLDN7)
Alternative Name:	CLDN7 ( <a href="#">CLDN7 Products</a> )

## Target Details

---

Background: Background: Plays a major role in tight junction-specific obliteration of the intercellular space By similarity.

Keen T.J., Submitted (SEP-1998) to the EMBL/GenBank/DDBJ databases.

Kalnine N., Submitted (MAY-2003) to the EMBL/GenBank/DDBJ databases.

The MGC Project Team, Genome Res. 14:2121-2127(2004).

Aliases: CEPTR L2 antibody, CEPTRL 2 antibody, CEPTRL2 antibody, Claudin 1 antibody, Claudin 7 antibody, Claudin 9 antibody, Claudin-7 antibody, Claudin1 antibody, Claudin7 antibody, Claudin9 antibody, CLD7\_HUMAN antibody, CLDN 7 antibody, CLDN-7 antibody, CLDN7 antibody, Clostridium perfringens enterotoxin receptor like 2 antibody, CPETR L2 antibody, CPETRL 2 antibody, CPETRL2 antibody, Hs.84359 antibody

---

UniProt: [O95471](#)

---

Pathways: [Hepatitis C](#)

## Application Details

---

Application Notes: WB:1:500-1:3000, IHC:1:50-1:100,

---

Restrictions: For Research Use only

## Handling

---

Format: Liquid

---

Buffer: Rabbit IgG in phosphate buffered saline (without Mg<sup>2+</sup> and Ca<sup>2+</sup>), pH 7.4, 150 mM NaCl, 0.02 % sodium azide and 50 % glycerol.

---

Preservative: Sodium azide

---

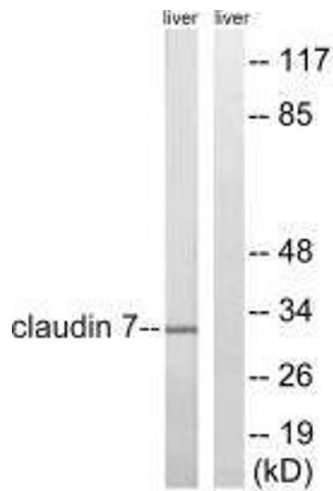
Precaution of Use: This product contains Sodium azide: a POISONOUS AND HAZARDOUS SUBSTANCE which should be handled by trained staff only.

---

Storage: -20 °C,-80 °C

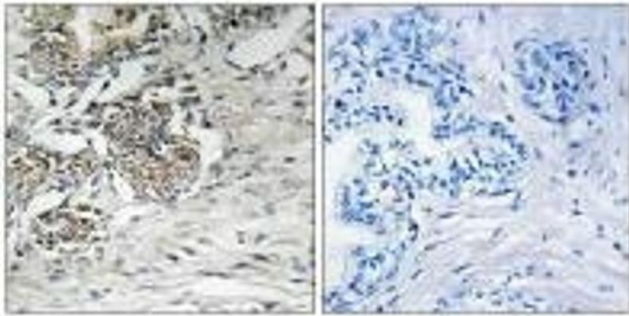
---

Storage Comment: Upon receipt, store at -20°C or -80°C. Avoid repeated freeze.



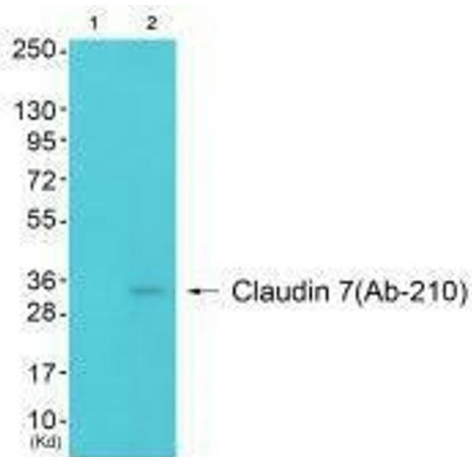
### Western Blotting

**Image 1.** Western blot analysis of extracts from rat liver cells, using Claudin 7 (Ab-210) antibody.



### Immunohistochemistry

**Image 2.** Immunohistochemistry analysis of paraffin-embedded human prostate carcinoma tissue using Claudin 7 (Ab-210) antibody.



### Western Blotting

**Image 3.** Western blot analysis of extracts from 3T3 cells (Lane 2), using Claudin 7 (Ab-210) antibody. The lane on the left is treated with synthesized peptide.