

Datasheet for ABIN7179996  
**anti-CSF1R antibody (Tyr809)**



[Go to Product page](#)

4 Images

## Overview

Quantity:	100 µL
Target:	CSF1R
Binding Specificity:	Tyr809
Reactivity:	Human
Host:	Rabbit
Clonality:	Polyclonal
Conjugate:	This CSF1R antibody is un-conjugated
Application:	Western Blotting (WB), ELISA, Immunohistochemistry (IHC), Immunofluorescence (IF)

## Product Details

Immunogen:	Synthesized non-phosphopeptide derived from Human CSFR around the phosphorylation site of tyrosine 809 (S-N-Y(p)-I-V).
Isotype:	IgG
Cross-Reactivity:	Human, Mouse
Purification:	The antibody was affinity-purified from rabbit antiserum by affinity-chromatography using epitope-specific immunogen.

## Target Details

Target:	CSF1R
Alternative Name:	CSF1R ( <a href="#">CSF1R Products</a> )

### Background:

Background: Tyrosine-protein kinase that acts as cell-surface receptor for CSF1 and IL34 and plays an essential role in the regulation of survival, proliferation and differentiation of hematopoietic precursor cells, especially mononuclear phagocytes, such as macrophages and monocytes. Promotes the release of proinflammatory chemokines in response to IL34 and CSF1, and thereby plays an important role in innate immunity and in inflammatory processes. Plays an important role in the regulation of osteoclast proliferation and differentiation, the regulation of bone resorption, and is required for normal bone and tooth development. Required for normal male and female fertility, and for normal development of milk ducts and acinar structures in the mammary gland during pregnancy. Promotes reorganization of the actin cytoskeleton, regulates formation of membrane ruffles, cell adhesion and cell migration, and promotes cancer cell invasion. Activates several signaling pathways in response to ligand binding. Phosphorylates PIK3R1, PLCG2, GRB2, SLA2 and CBL. Activation of PLCG2 leads to the production of the cellular signaling molecules diacylglycerol and inositol 1,4,5-trisphosphate, that then lead to the activation of protein kinase C family members, especially PRKCD. Phosphorylation of PIK3R1, the regulatory subunit of phosphatidylinositol 3-kinase, leads to activation of the AKT1 signaling pathway. Activated CSF1R also mediates activation of the MAP kinases MAPK1/ERK2 and/or MAPK3/ERK1, and of the SRC family kinases SRC, FYN and YES1. Activated CSF1R transmits signals both via proteins that directly interact with phosphorylated tyrosine residues in its intracellular domain, or via adapter proteins, such as GRB2. Promotes activation of STAT family members STAT3, STAT5A and/or STAT5B. Promotes tyrosine phosphorylation of SHC1 and INPP5D/SHIP-1. Receptor signaling is down-regulated by protein phosphatases, such as INPP5D/SHIP-1, that dephosphorylate the receptor and its downstream effectors, and by rapid internalization of the activated receptor.

Hampe A., *Oncogene Res.* 4:9-17(1989).

Coussens L., *Nature* 320:277-280(1986).

Andre C., *Genomics* 39:216-226(1997)

Aliases: C FMS antibody, CD 115 antibody, CD115 antibody, CD115 antigen antibody, CFMS antibody, Colony stimulating factor 1 receptor antibody, Colony stimulating factor I receptor antibody, CSF 1 R antibody, CSF 1R antibody, CSF-1 receptor antibody, CSF-1-R antibody, CSF1 R antibody, CSF1R antibody, CSF1R\_HUMAN antibody, CSFR antibody, EC 2.7.10.1 antibody, FIM 2 antibody, FIM2 antibody, FMS antibody, FMS proto oncogene antibody, FMS protooncogene antibody, HDLS antibody, M-CSF Receptor antibody, M-CSF-R antibody, Macrophage colony stimulating factor 1 receptor antibody, Macrophage colony stimulating factor I receptor antibody, Macrophage colony-stimulating factor 1 receptor antibody, McDonough feline sarcoma viral (v fms) oncogene homolog antibody, MCSFR antibody,

Target Details

	Oncogen FMS antibody, Proto-oncogene c-Fms antibody, V-FMS McDonough feline sarcoma viral oncogen homolog, formerly antibody
UniProt:	P07333
Pathways:	RTK Signaling, Inositol Metabolic Process, Cell-Cell Junction Organization

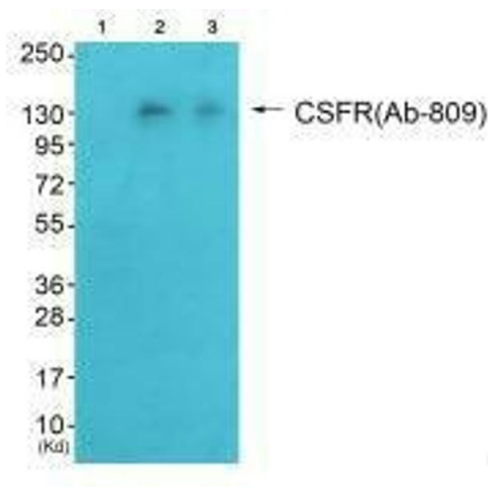
Application Details

Application Notes:	WB:1:500-1:3000, IHC:1:50-1:100, IF:1:100-1:500,
Restrictions:	For Research Use only

Handling

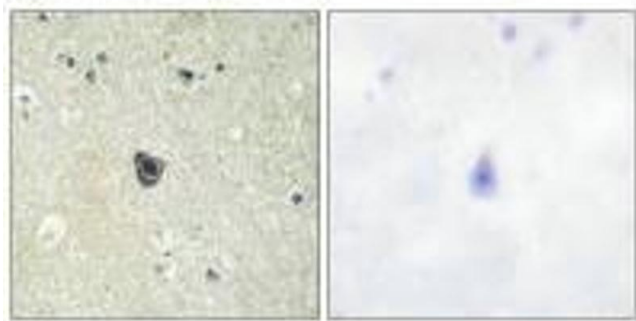
Format:	Liquid
Buffer:	Rabbit IgG in phosphate buffered saline (without Mg2+ and Ca2+), pH 7.4, 150 mM NaCl, 0.02 % sodium azide and 50 % glycerol.
Preservative:	Sodium azide
Precaution of Use:	This product contains Sodium azide: a POISONOUS AND HAZARDOUS SUBSTANCE which should be handled by trained staff only.
Storage:	-20 °C,-80 °C
Storage Comment:	Upon receipt, store at -20°C or -80°C. Avoid repeated freeze.

Images



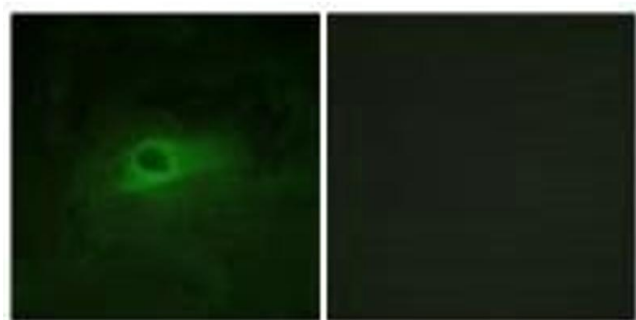
**Western Blotting**

**Image 1.** Western blot analysis of extracts from HeLa cells (Lane 2) and HepG2 cells (Lane 3), using CSFR (Ab-809) antibody. The lane on the left is treated with synthesized peptide.



### Immunohistochemistry

**Image 2.** Immunohistochemistry analysis of paraffin-embedded human brain tissue using CSFR (Ab-809) antibody.



### Immunofluorescence

**Image 3.** Immunofluorescence analysis of HeLa cells, using CSFR (Ab-809) antibody.

Please check the [product details page](#) for more images. Overall 4 images are available for ABIN7179996.