

Datasheet for ABIN7179999

anti-Cyclin D2 antibody (Thr280)[Go to Product page](#)**1** Image

Overview

Quantity:	100 µL
Target:	Cyclin D2 (CCND2)
Binding Specificity:	Thr280
Reactivity:	Human
Host:	Rabbit
Clonality:	Polyclonal
Conjugate:	This Cyclin D2 antibody is un-conjugated
Application:	Western Blotting (WB), ELISA

Product Details

Immunogen:	Synthesized non-phosphopeptide derived from Human Cyclin D2 around the phosphorylation site of threonine 280 (A-S-T(p)-P-T).
Isotype:	IgG
Cross-Reactivity:	Human, Mouse
Purification:	The antibody was affinity-purified from rabbit antiserum by affinity-chromatography using epitope-specific immunogen.

Target Details

Target:	Cyclin D2 (CCND2)
Alternative Name:	CCND2 (CCND2 Products)

Target Details

Background:	<p>Background: Regulatory component of the cyclin D2-CDK4 (DC) complex that phosphorylates and inhibits members of the retinoblastoma (RB) protein family including RB1 and regulates the cell-cycle during G1/S transition. Phosphorylation of RB1 allows dissociation of the transcription factor E2F from the RB/E2F complex and the subsequent transcription of E2F target genes which are responsible for the progression through the G1 phase.</p> <p>Hypophosphorylates RB1 in early G1 phase. Cyclin D-CDK4 complexes are major integrators of various mitogenic and antimitogenic signals. Also substrate for SMAD3, phosphorylating SMAD3 in a cell-cycle-dependent manner and repressing its transcriptional activity. Component of the ternary complex, cyclin D2/CDK4/CDKN1B, required for nuclear translocation and activity of the cyclin D-CDK4 complex By similarity.</p> <p>Xiong Y., Genomics 13:575-584(1992).</p> <p>Palmero I., Oncogene 8:1049-1054(1993).</p> <p>Kalnine N., Submitted (OCT-2004) to the EMBL/GenBank/DDBJ databases.</p> <p>Aliases: CCND 2 antibody, ccnd2 antibody, CCND2_HUMAN antibody, CyclinD2 antibody, G1/S specific cyclin D2 antibody, G1/S-specific cyclin-D2 antibody, KIAK0002 antibody, MGC102758 antibody, MPPH3 antibody</p>
-------------	---

UniProt:	P30279
Pathways:	Cell Division Cycle, Mitotic G1-G1/S Phases

Application Details

Application Notes:	WB:1:500-1:3000,
Restrictions:	For Research Use only

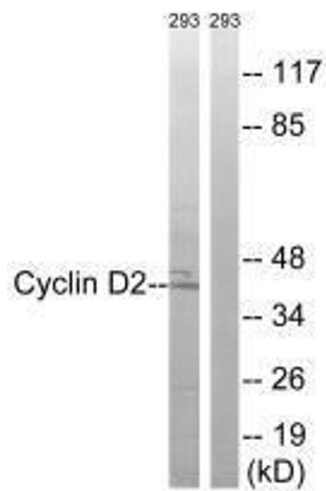
Handling

Format:	Liquid
Buffer:	Rabbit IgG in phosphate buffered saline (without Mg ²⁺ and Ca ²⁺), pH 7.4, 150 mM NaCl, 0.02 % sodium azide and 50 % glycerol.
Preservative:	Sodium azide
Precaution of Use:	This product contains Sodium azide: a POISONOUS AND HAZARDOUS SUBSTANCE which should be handled by trained staff only.
Storage:	-20 °C,-80 °C

Handling

Storage Comment: Upon receipt, store at -20°C or -80°C. Avoid repeated freeze.

Images



Western Blotting

Image 1. Western blot analysis of extracts from 293 cells, using Cyclin D2 (Ab-280) antibody.