



[Go to Product page](#)

Datasheet for ABIN7180000
anti-Cyclin E1 antibody (Thr395)

3 Images

Overview

Quantity:	100 µL
Target:	Cyclin E1 (CCNE1)
Binding Specificity:	Thr395
Reactivity:	Human
Host:	Rabbit
Clonality:	Polyclonal
Conjugate:	This Cyclin E1 antibody is un-conjugated
Application:	Western Blotting (WB), Immunohistochemistry (IHC), ELISA, Immunofluorescence (IF)

Product Details

Immunogen:	Synthesized non-phosphopeptide derived from Human Cyclin E1 around the phosphorylation site of threonine 395 (L-L-T-P-P).
Isotype:	IgG
Cross-Reactivity:	Human, Mouse
Purification:	The antibody was affinity-purified from rabbit antiserum by affinity-chromatography using epitope-specific immunogen.

Target Details

Target:	Cyclin E1 (CCNE1)
Alternative Name:	CCNE1 (CCNE1 Products)

Target Details

Background: Background: Essential for the control of the cell cycle at the G1/S (start) transition.

Wentao Deng, J. Virol., Dec 2004, 78: 13954 - 13965.

Tianlin Ma, PNAS, Jan 1999, 96: 382.

Nathalie Cueille, J. Virol., Sep 1998, 72: 7255 - 7262.

Chiung-Yueh Hsu, J. Virol., Jan 2007, 81: 384 - 394.

Aliases: CCNE antibody, Ccne1 antibody, CCNE1_HUMAN antibody, cyclin E variant ex5del antibody, cyclin E variant ex7del antibody, Cyclin E1 antibody, Cyclin Es antibody, Cyclin Et antibody, CyclinE antibody, G1/S specific cyclin E antibody, G1/S-specific cyclin-E1 antibody

UniProt: [P24864](#)

Pathways: [Cell Division Cycle](#), [Intracellular Steroid Hormone Receptor Signaling Pathway](#), [Nuclear Hormone Receptor Binding](#), [Mitotic G1-G1/S Phases](#)

Application Details

Application Notes: WB:1:500-1:3000, IHC:1:50-1:100, IF:1:100-1:500,

Restrictions: For Research Use only

Handling

Format: Liquid

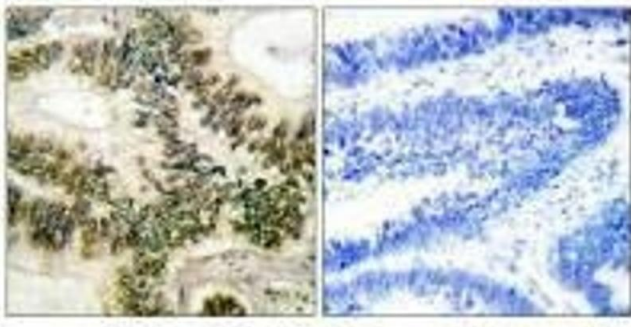
Buffer: Rabbit IgG in phosphate buffered saline (without Mg²⁺ and Ca²⁺), pH 7.4, 150 mM NaCl, 0.02 % sodium azide and 50 % glycerol.

Preservative: Sodium azide

Precaution of Use: This product contains Sodium azide: a POISONOUS AND HAZARDOUS SUBSTANCE which should be handled by trained staff only.

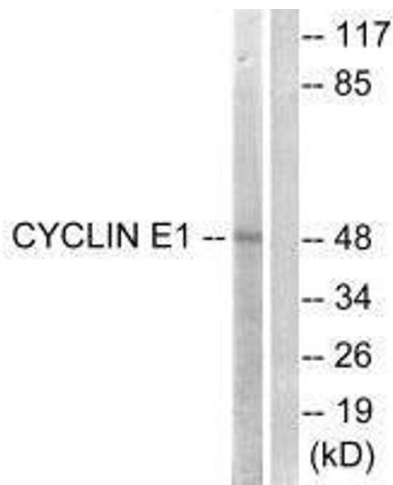
Storage: -20 °C,-80 °C

Storage Comment: Upon receipt, store at -20°C or -80°C. Avoid repeated freeze.



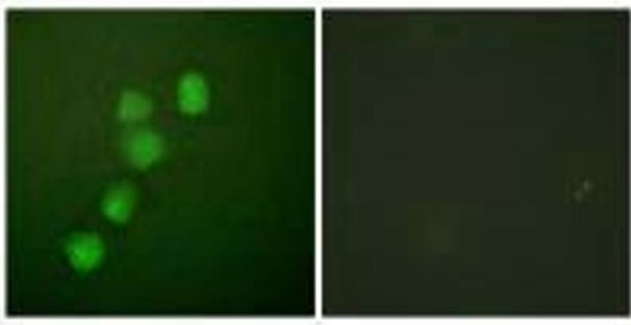
Immunohistochemistry

Image 1. Immunohistochemical analysis of paraffin-embedded human colon carcinoma tissue using Cyclin E1 (Ab-395) antibody.



Western Blotting

Image 2. Western blot analysis of extracts from HeLa cells, treated with Paclitaxel (1uM, 60 mins), using Cyclin E1 (Ab-395) antibody.



Immunofluorescence

Image 3. Immunofluorescence analysis of HuvEc cells, using Cyclin E1 (Ab-395) antibody.