



[Go to Product page](#)

Datasheet for ABIN7180009
anti-Ezrin antibody (Tyr478)

2 Images

Overview

Quantity:	100 µL
Target:	Ezrin (EZR)
Binding Specificity:	Tyr478
Reactivity:	Human
Host:	Rabbit
Clonality:	Polyclonal
Conjugate:	This Ezrin antibody is un-conjugated
Application:	Western Blotting (WB), ELISA

Product Details

Immunogen:	Synthesized non-phosphopeptide derived from Human Ezrin around the phosphorylation site of tyrosine 478 (P-V-Y(p)-E-P).
Isotype:	IgG
Cross-Reactivity:	Human, Mouse
Purification:	The antibody was affinity-purified from rabbit antiserum by affinity-chromatography using epitope-specific immunogen.

Target Details

Target:	Ezrin (EZR)
Alternative Name:	EZR (EZR Products)

Target Details

Background: Background: Probably involved in connections of major cytoskeletal structures to the plasma membrane. In epithelial cells, required for the formation of microvilli and membrane ruffles on the apical pole. Along with PLEKHG6, required for normal macropinocytosis.

Gould K.L., EMBO J. 8:4133-4142(1989).
Turunen O., J. Biol. Chem. 264:16727-16732(1989).
Mungall A.J., Nature 425:805-811(2003).

Aliases: Villin 2 ezrin antibody, CVIL antibody, CVL antibody, Cytovillin 2 antibody, Cytovillin antibody, DKFZp762H157 antibody, Epididymis secretory protein Li 105 antibody, EZR antibody, EZRI_HUMAN antibody, Ezrin antibody, FLJ26216 antibody, HEL S 105 antibody, MGC1584 antibody, p81 antibody, VIL 2 antibody, VIL2 antibody, Villin 2 (ezrin) antibody, Villin 2 antibody, Villin-2 antibody, Villin2 antibody

UniProt: [P15311](#)

Pathways: [Maintenance of Protein Location](#)

Application Details

Application Notes: WB:1:500-1:3000,

Restrictions: For Research Use only

Handling

Format: Liquid

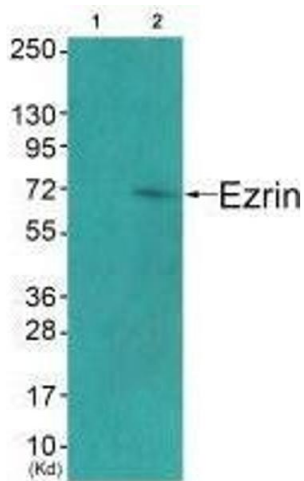
Buffer: Rabbit IgG in phosphate buffered saline (without Mg²⁺ and Ca²⁺), pH 7.4, 150 mM NaCl, 0.02 % sodium azide and 50 % glycerol.

Preservative: Sodium azide

Precaution of Use: This product contains Sodium azide: a POISONOUS AND HAZARDOUS SUBSTANCE which should be handled by trained staff only.

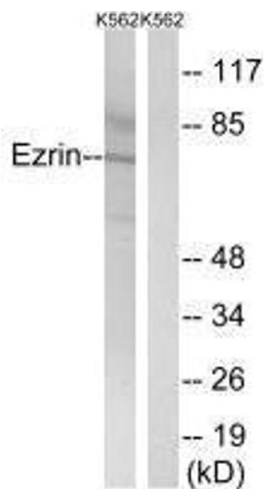
Storage: -20 °C,-80 °C

Storage Comment: Upon receipt, store at -20°C or -80°C. Avoid repeated freeze.



Western Blotting

Image 1. Western blot analysis of extracts from COS7 cells (Lane 2), using Ezrin (Ab-478) antibody. The lane on the left is treated with synthesized peptide.



Western Blotting

Image 2. Western blot analysis of extracts from K562 cells, using Ezrin (Ab-478) antibody.