

Datasheet for ABIN7180030  
**anti-ILK antibody (Ser246)**



[Go to Product page](#)

2 Images

## Overview

Quantity:	100 µL
Target:	ILK
Binding Specificity:	Ser246
Reactivity:	Human
Host:	Rabbit
Clonality:	Polyclonal
Conjugate:	This ILK antibody is un-conjugated
Application:	Western Blotting (WB), ELISA, Immunohistochemistry (IHC)

## Product Details

Immunogen:	Synthesized non-phosphopeptide derived from Human ILK around the phosphorylation site of serine 246 (I-F-S(p)-H-P).
Isotype:	IgG
Cross-Reactivity:	Human, Mouse
Purification:	The antibody was affinity-purified from rabbit antiserum by affinity-chromatography using epitope-specific immunogen.

## Target Details

Target:	ILK
Alternative Name:	ILK ( <a href="#">ILK Products</a> )

## Target Details

---

**Background:** Background: Receptor-proximal protein kinase regulating integrin-mediated signal transduction. May act as a mediator of inside-out integrin signaling. Focal adhesion protein part of the complex ILK-PINCH. This complex is considered to be one of the convergence points of integrin- and growth factor-signaling pathway. Could be implicated in mediating cell architecture, adhesion to integrin substrates and anchorage-dependent growth in epithelial cells. Phosphorylates beta-1 and beta-3 integrin subunit on serine and threonine residues, but also AKT1 and GSK3B.

Hannigan G.E., Nature 379:91-96(1996).

Janji B., Oncogene 19:3069-3077(2000).

Tadic B., Submitted (MAR-2000) to the EMBL/GenBank/DDBJ databases.

Aliases: 59 kDa serine/threonine protein kinase antibody, 59 kDa serine/threonine-protein kinase antibody, DKFZp686F1765 antibody, Epididymis secretory protein Li 28 antibody, HEL S 28 antibody, ILK 1 antibody, ILK 2 antibody, ILK antibody, ILK-1 antibody, ILK-2 antibody, ILK\_HUMAN antibody, ILK1 antibody, ILK2 antibody, Integrin linked kinase 2 antibody, Integrin linked Kinase antibody, Integrin linked protein kinase antibody, Integrin-linked protein kinase antibody, p59 antibody, p59ILK antibody

---

**UniProt:** [Q13418](#)

---

**Pathways:** [Regulation of Muscle Cell Differentiation](#), [Regulation of Cell Size](#), [Maintenance of Protein Location](#), [Skeletal Muscle Fiber Development](#), [Smooth Muscle Cell Migration](#)

## Application Details

---

**Application Notes:** WB:1:500-1:3000, IHC:1:50-1:100,

---

**Restrictions:** For Research Use only

## Handling

---

**Format:** Liquid

---

**Buffer:** Rabbit IgG in phosphate buffered saline (without Mg<sup>2+</sup> and Ca<sup>2+</sup>), pH 7.4, 150 mM NaCl, 0.02 % sodium azide and 50 % glycerol.

---

**Preservative:** Sodium azide

---

**Precaution of Use:** This product contains Sodium azide: a POISONOUS AND HAZARDOUS SUBSTANCE which should be handled by trained staff only.

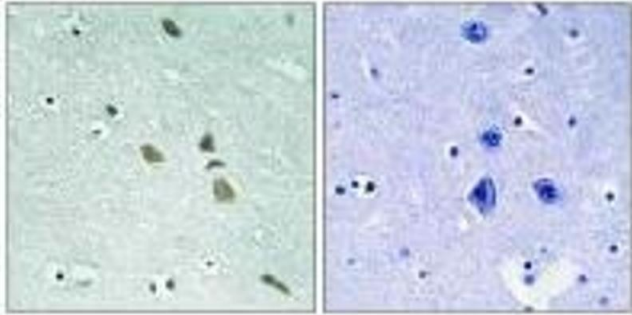
---

## Handling

Storage: -20 °C,-80 °C

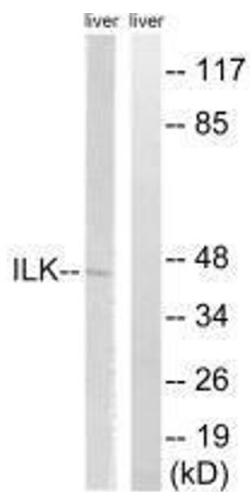
Storage Comment: Upon receipt, store at -20°C or -80°C. Avoid repeated freeze.

## Images



### Immunohistochemistry

**Image 1.** Immunohistochemistry analysis of paraffin-embedded human brain tissue using ILK (Ab-246) antibody.



### Western Blotting

**Image 2.** Western blot analysis of extracts from rat liver cells, using ILK (Ab-246) antibody.