



[Go to Product page](#)

Datasheet for ABIN7180033
anti-IRS1 antibody (Ser312)

4 Images

Overview

Quantity:	100 µL
Target:	IRS1
Binding Specificity:	Ser312
Reactivity:	Human
Host:	Rabbit
Clonality:	Polyclonal
Conjugate:	This IRS1 antibody is un-conjugated
Application:	Western Blotting (WB), Immunohistochemistry (IHC), ELISA, Immunofluorescence (IF)

Product Details

Immunogen:	Synthesized non-phosphopeptide derived from Human IRS-1 around the phosphorylation site of serine 312 (A-T-S(p)-P-A).
Isotype:	IgG
Cross-Reactivity:	Human, Mouse, Rat
Purification:	The antibody was affinity-purified from rabbit antiserum by affinity-chromatography using epitope-specific immunogen.

Target Details

Target:	IRS1
Alternative Name:	IRS1 (IRS1 Products)

Target Details

Background: Background: May mediate the control of various cellular processes by insulin. When phosphorylated by the insulin receptor binds specifically to various cellular proteins containing SH2 domains such as phosphatidylinositol 3-kinase p85 subunit or GRB2. Activates phosphatidylinositol 3-kinase when bound to the regulatory p85 subunit By similarity.

Araki E., Diabetes 42:1041-1054(1993).
Nishiyama M., Biochem. Biophys. Res. Commun. 183:280-285(1992).
The MGC Project Team, Genome Res. 14:2121-2127(2004)

Aliases: HIRS 1 antibody, HIRS1 antibody, Insulin receptor substrate 1 antibody, IRS 1 antibody, IRS-1 antibody, IRS1 antibody, IRS1_HUMAN antibody, OTTHUMP00000164234 antibody

UniProt: [P35568](#)

Pathways: [Fc-epsilon Receptor Signaling Pathway](#), [EGFR Signaling Pathway](#), [Neurotrophin Signaling Pathway](#), [Positive Regulation of Peptide Hormone Secretion](#), [Hormone Transport](#), [Negative Regulation of Hormone Secretion](#), [Response to Growth Hormone Stimulus](#), [Carbohydrate Homeostasis](#), [Regulation of Carbohydrate Metabolic Process](#)

Application Details

Application Notes: WB:1:500-1:3000, IHC:1:50-1:100, IF:1:100-1:500,

Restrictions: For Research Use only

Handling

Format: Liquid

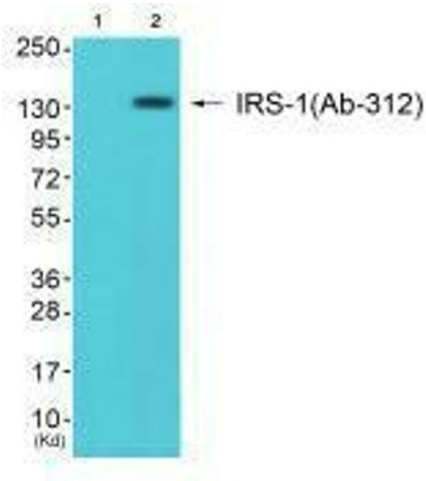
Buffer: Rabbit IgG in phosphate buffered saline (without Mg²⁺ and Ca²⁺), pH 7.4, 150 mM NaCl, 0.02 % sodium azide and 50 % glycerol.

Preservative: Sodium azide

Precaution of Use: This product contains Sodium azide: a POISONOUS AND HAZARDOUS SUBSTANCE which should be handled by trained staff only.

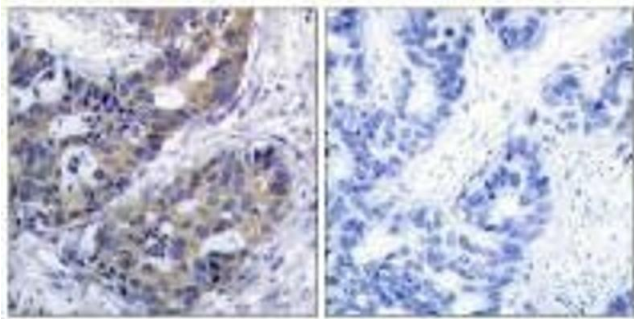
Storage: -20 °C,-80 °C

Storage Comment: Upon receipt, store at -20°C or -80°C. Avoid repeated freeze.



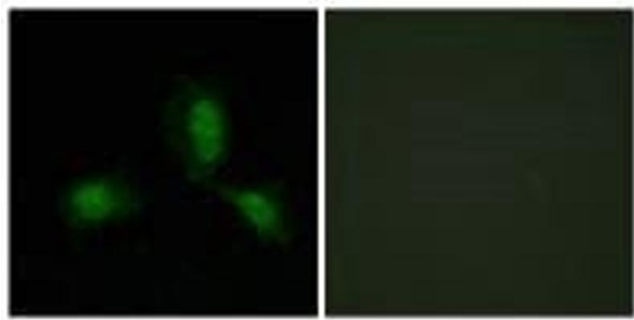
Western Blotting

Image 1. Western blot analysis of extracts from JK cells (Lane 2), using IRS-1 (Ab-312) antibody. The lane on the left is treated with synthesized peptide.



Immunohistochemistry

Image 2. Immunohistochemistry analysis of paraffin-embedded human breast carcinoma tissue, using IRS-1 (Ab-312) antibody.



Immunofluorescence

Image 3. Immunofluorescence analysis of HeLa cells, using IRS-1 (Ab-312) antibody.

Please check the [product details page](#) for more images. Overall 4 images are available for ABIN7180033.