



Datasheet for ABIN7180039
anti-LAT antibody (Tyr255)



[Go to Product page](#)

1 Image

Overview

Quantity:	100 µL
Target:	LAT
Binding Specificity:	Tyr255
Reactivity:	Human
Host:	Rabbit
Clonality:	Polyclonal
Conjugate:	This LAT antibody is un-conjugated
Application:	Western Blotting (WB), ELISA

Product Details

Immunogen:	Synthesized non-phosphopeptide derived from Human LAT around the phosphorylation site of tyrosine 255.
Isotype:	IgG
Cross-Reactivity:	Human, Mouse, Rat
Purification:	The antibody was affinity-purified from rabbit antiserum by affinity-chromatography using epitope-specific immunogen.

Target Details

Target:	LAT
Alternative Name:	LAT (LAT Products)

Target Details

Background: Background: Required for TCR (T-cell antigen receptor)- and pre-TCR-mediated signaling, both in mature T-cells and during their development. Involved in FCGR3 (low affinity immunoglobulin gamma Fc region receptor III)-mediated signaling in natural killer cells and FCER1 (high affinity immunoglobulin epsilon receptor)-mediated signaling in mast cells. Couples activation of these receptors and their associated kinases with distal intracellular events such as mobilization of intracellular calcium stores, PKC activation, MAPK activation or cytoskeletal reorganization through the recruitment of PLCG1, GRB2, GRAP2, and other signaling molecules.

Zhang W., Cell 92:83-92(1998).

Martin J., Nature 432:988-994(2004).

Aliases: 36 kDa phospho tyrosine adapter protein antibody, 36 kDa phospho-tyrosine adapter protein antibody, 36 kDa phospho-tyrosine adaptor protein antibody, LAT 1 antibody, lat antibody, LAT_HUMAN antibody, LAT1 antibody, Linker for activation of T cells antibody, Linker for activation of T cells family member 1 antibody, linker for activation of T cells, transmembrane adaptor antibody, Linker for activation of T-cells family member 1 antibody, p36 38 antibody, p36-38 antibody, pp36 antibody

UniProt: [O43561](#)

Pathways: [TCR Signaling](#), [Fc-epsilon Receptor Signaling Pathway](#)

Application Details

Application Notes: WB:1:500-1:3000,

Restrictions: For Research Use only

Handling

Format: Liquid

Buffer: Rabbit IgG in phosphate buffered saline (without Mg²⁺ and Ca²⁺), pH 7.4, 150 mM NaCl, 0.02 % sodium azide and 50 % glycerol.

Preservative: Sodium azide

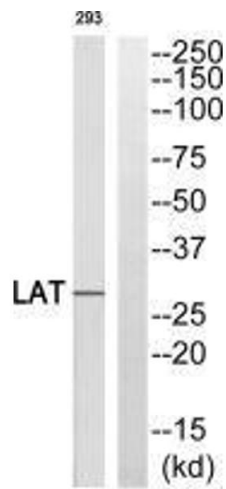
Precaution of Use: This product contains Sodium azide: a POISONOUS AND HAZARDOUS SUBSTANCE which should be handled by trained staff only.

Storage: -20 °C,-80 °C

Handling

Storage Comment: Upon receipt, store at -20°C or -80°C. Avoid repeated freeze.

Images



Western Blotting

Image 1. Western blot analysis of extracts from 293 cells, using LAT (Ab-255) antibody.