



[Go to Product page](#)

Datasheet for ABIN7180040  
**anti-LIMK2 antibody (Ser283)**

2 Images

Overview

Quantity:	100 µL
Target:	LIMK2
Binding Specificity:	Ser283
Reactivity:	Human
Host:	Rabbit
Clonality:	Polyclonal
Conjugate:	This LIMK2 antibody is un-conjugated
Application:	Western Blotting (WB), ELISA

Product Details

Immunogen:	Synthesized non-phosphopeptide derived from Human LIMK2 around the phosphorylation site of serine 283 (R-R-S(p)-L-R).
Isotype:	IgG
Cross-Reactivity:	Human, Mouse
Purification:	The antibody was affinity-purified from rabbit antiserum by affinity-chromatography using epitope-specific immunogen.

Target Details

Target:	LIMK2
Alternative Name:	LIMK2 ( <a href="#">LIMK2 Products</a> )

## Target Details

---

Background: Background: Displays serine/threonine-specific phosphorylation of myelin basic protein and histone (MBP) in vitro.

Okano I., J. Biol. Chem. 270:31321-31330(1995).

Osada H., Biochem. Biophys. Res. Commun. 229:582-589(1996).

Collins J.E., Genome Biol. 5:RESEARCH84.1-RESEARCH84.11(2004)

Aliases: LIM domain kinase 2 antibody, LIM kinase 2 antibody, LIMK 2 antibody, LIMK-2 antibody, Limk2 antibody, LIMK2\_HUMAN antibody

---

UniProt: [P53671](#)

## Application Details

---

Application Notes: WB:1:500-1:3000,

Restrictions: For Research Use only

## Handling

---

Format: Liquid

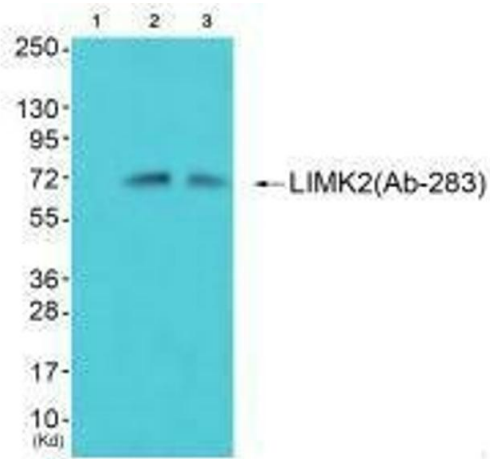
Buffer: Rabbit IgG in phosphate buffered saline (without Mg<sup>2+</sup> and Ca<sup>2+</sup>), pH 7.4, 150 mM NaCl, 0.02 % sodium azide and 50 % glycerol.

Preservative: Sodium azide

Precaution of Use: This product contains Sodium azide: a POISONOUS AND HAZARDOUS SUBSTANCE which should be handled by trained staff only.

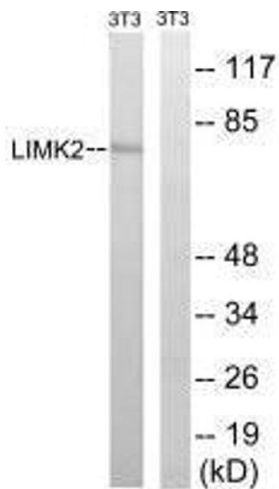
Storage: -20 °C,-80 °C

Storage Comment: Upon receipt, store at -20°C or -80°C. Avoid repeated freeze.



### Western Blotting

**Image 1.** Western blot analysis of extracts from 293 cells (Lane 2) and cos-7 cells (Lane 3), using LIMK2 (Ab-283) antibody. The lane on the left is treated with synthesized peptide.



### Western Blotting

**Image 2.** Western blot analysis of extracts from 3T3 cells, treated with PMA (125 ng/mL, 30 mins), using LIMK2 (Ab-283) antibody.