



[Go to Product page](#)

Datasheet for ABIN7180048

anti-MITF antibody (Ser73, Ser180)

4 Images

Overview

Quantity:	100 µL
Target:	MITF
Binding Specificity:	Ser73, Ser180
Reactivity:	Human
Host:	Rabbit
Clonality:	Polyclonal
Conjugate:	This MITF antibody is un-conjugated
Application:	Western Blotting (WB), Immunofluorescence (IF), Immunohistochemistry (IHC), ELISA

Product Details

Immunogen:	Synthesized non-phosphopeptide derived from Human MITF around the phosphorylation site of serine 180/73 (P-N-S(p)-P-M).
Isotype:	IgG
Cross-Reactivity:	Human, Mouse
Purification:	The antibody was affinity-purified from rabbit antiserum by affinity-chromatography using epitope-specific immunogen.

Target Details

Target:	MITF
Alternative Name:	MITF (MITF Products)

Target Details

Background:	<p>Background: Transcription factor that regulates the expression of genes with essential roles in cell differentiation, proliferation and survival. Binds to symmetrical DNA sequences (E-boxes) (5'-CACGTG-3') found in the promoters of target genes, such as BCL2 and tyrosinase (TYR). Plays an important role in melanocyte development by regulating the expression of tyrosinase (TYR) and tyrosinase-related protein 1 (TYRP1). Plays a critical role in the differentiation of various cell types, such as neural crest-derived melanocytes, mast cells, osteoclasts and optic cup-derived retinal pigment epithelium.</p> <p>J</p> <p>Aliases: BHLHE32 antibody, bHLHe32 antibody, Class E basic helix-loop-helix protein 32 antibody, CMM8 antibody, Homolog of mouse microphthalmia antibody, Mi antibody, Microphthalmia associated transcription factor antibody, Microphthalmia, mouse, homolog of antibody, Microphthalmia-associated transcription factor antibody, MITF antibody, MITF_HUMAN antibody, mitfa antibody, nacre antibody, WS2 antibody, WS2A antibody, z3A.1 antibody</p>
-------------	---

UniProt:	O75030
----------	------------------------

Pathways:	Chromatin Binding
-----------	-----------------------------------

Application Details

Application Notes:	WB:1:500-1:3000, IHC:1:50-1:100, IF:1:100-1:500,
--------------------	--

Restrictions:	For Research Use only
---------------	-----------------------

Handling

Format:	Liquid
---------	--------

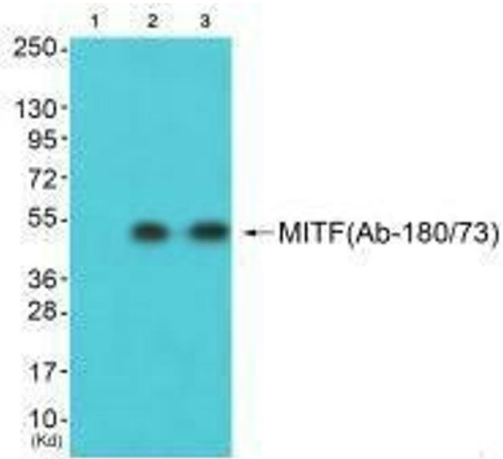
Buffer:	Rabbit IgG in phosphate buffered saline (without Mg ²⁺ and Ca ²⁺), pH 7.4, 150 mM NaCl, 0.02 % sodium azide and 50 % glycerol.
---------	---

Preservative:	Sodium azide
---------------	--------------

Precaution of Use:	This product contains Sodium azide: a POISONOUS AND HAZARDOUS SUBSTANCE which should be handled by trained staff only.
--------------------	--

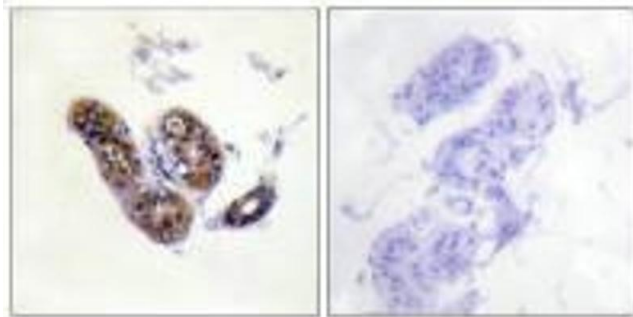
Storage:	-20 °C,-80 °C
----------	---------------

Storage Comment:	Upon receipt, store at -20°C or -80°C. Avoid repeated freeze.
------------------	---



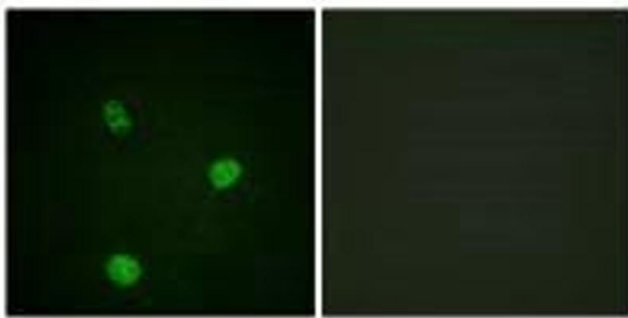
Western Blotting

Image 1. Western blot analysis of extracts from HepG2 cells (Lane 2) and 3T3 cells (Lane 3), using MITF (Ab-180/73) antibody. The lane on the left is treated with synthesized peptide.



Immunohistochemistry

Image 2. Immunohistochemistry analysis of paraffin-embedded human skin tissue using MITF (Ab-180/73) antibody.



Immunofluorescence

Image 3. Immunofluorescence analysis of HeLa cells, using MITF (Ab-180/73) antibody.

Please check the [product details page](#) for more images. Overall 4 images are available for ABIN7180048.