

Datasheet for ABIN7180056
anti-NUDC antibody (Ser326)[Go to Product page](#)

2 Images

Overview

Quantity:	100 µL
Target:	NUDC
Binding Specificity:	Ser326
Reactivity:	Human
Host:	Rabbit
Clonality:	Polyclonal
Conjugate:	This NUDC antibody is un-conjugated
Application:	Western Blotting (WB), ELISA

Product Details

Immunogen:	Synthesized non-phosphopeptide derived from Human NudC around the phosphorylation site of serine 326 (D-F-S(p)-K-A).
Isotype:	IgG
Cross-Reactivity:	Human, Mouse
Purification:	The antibody was affinity-purified from rabbit antiserum by affinity-chromatography using epitope-specific immunogen.

Target Details

Target:	NUDC
Abstract:	NUDC Products

Target Details

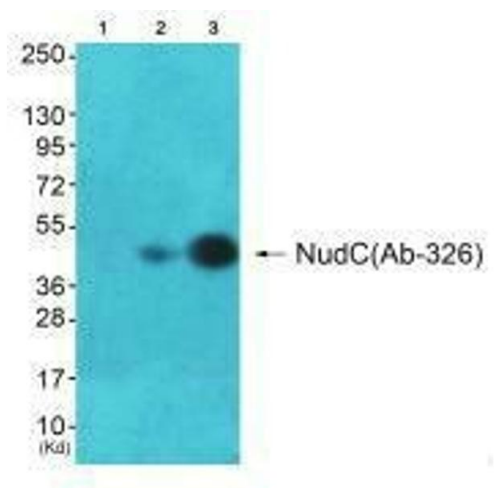
Background:	<p>Background:</p> <p>Plays a role in neurogenesis and neuronal migration By similarity. Necessary for correct formation of mitotic spindles and chromosome separation during mitosis. Necessary for cytokinesis and cell proliferation.</p> <p>Miller B.A., Exp. Hematol. 27:742-750(1999).</p> <p>Matsumoto N., Hum. Genet. 104:498-504(1999).</p> <p>Wiemann S., Genome Res. 11:422-435(2001).</p> <p>Aliases: HNUDC antibody, MNUDC antibody, MNUDC protein antibody, NPD011 antibody, Nuclear distribution C homolog antibody, Nuclear distribution gene C (A.nidulans) homolog antibody, Nuclear distribution gene C homolog antibody, Nuclear distribution gene C homolog (A. nidulans) antibody, Nuclear distribution protein C homolog antibody, Nuclear migration protein nudC antibody, nudC antibody, NudC nuclear distribution protein antibody, NUDC_HUMAN antibody, OTTHUMP00000004405 antibody, SIG 92 antibody, SIG92 antibody</p>
UniProt:	Q9Y266

Application Details

Application Notes:	WB:1:500-1:3000,
Restrictions:	For Research Use only

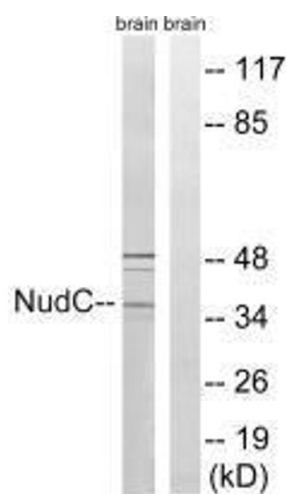
Handling

Format:	Liquid
Buffer:	Rabbit IgG in phosphate buffered saline (without Mg ²⁺ and Ca ²⁺), pH 7.4, 150 mM NaCl, 0.02 % sodium azide and 50 % glycerol.
Preservative:	Sodium azide
Precaution of Use:	This product contains Sodium azide: a POISONOUS AND HAZARDOUS SUBSTANCE which should be handled by trained staff only.
Storage:	-20 °C,-80 °C
Storage Comment:	Upon receipt, store at -20°C or -80°C. Avoid repeated freeze.



Western Blotting

Image 1. Western blot analysis of extracts from A549 cells and HepG2(Lane 3) cells, using NudC (Ab-326) antibody. The lane on the left is treated with synthesized peptide.



Western Blotting

Image 2. Western blot analysis of extracts from rat brain cells, using NudC (Ab-326) antibody.