

Datasheet for ABIN7180057
anti-BCAR1 antibody (Tyr410)[Go to Product page](#)

3 Images

Overview

Quantity:	100 µL
Target:	BCAR1
Binding Specificity:	Tyr410
Reactivity:	Human
Host:	Rabbit
Clonality:	Polyclonal
Conjugate:	This BCAR1 antibody is un-conjugated
Application:	Western Blotting (WB), ELISA, Immunohistochemistry (IHC)

Product Details

Immunogen:	Synthesized non-phosphopeptide derived from Human p130 Cas around the phosphorylation site of tyrosine 410 (G-V-T-A-V).
Isotype:	IgG
Cross-Reactivity:	Human, Mouse, Rat
Purification:	The antibody was affinity-purified from rabbit antiserum by affinity-chromatography using epitope-specific immunogen.

Target Details

Target:	BCAR1
Alternative Name:	BCAR1 (BCAR1 Products)

Target Details

Background: Background: Docking protein which plays a central coordinating role for tyrosine kinase-based signaling related to cell adhesion. Implicated in induction of cell migration. Overexpression confers antiestrogen resistance on breast cancer cells.

Katarzyna Modzelewska, J. Biol. Chem., Dec 2006, 281: 37527 - 37535.

Kevin Ogden, Am J Physiol Heart Circ Physiol, Dec 2006, 291: H2857 - H2863.

Sangkil Nam, Cancer Res., Oct 2005, 65: 9185 - 9189.

Norikazu Yamana, Mol. Cell. Biol., Sep 2006, 26: 6844 - 6

Aliases: BCAR 1 antibody, Bcar1 antibody, BCAR1_HUMAN antibody, Breast cancer anti estrogen resistance 1 antibody, Breast cancer anti estrogen resistance 1 protein antibody, Breast cancer anti-estrogen resistance protein 1 antibody, CAS antibody, Cas scaffolding protein family member 1 antibody, CAS1 antibody, Cass1 antibody, Crk associated substrate antibody, Crk associated substrate p130Cas antibody, CRK-associated substrate antibody, CRKAS antibody, FLJ12176 antibody, FLJ45059 antibody, p130cas antibody

UniProt: [P56945](#)

Pathways: [EGFR Signaling Pathway](#), [Neurotrophin Signaling Pathway](#), [CXCR4-mediated Signaling Events](#), [Platelet-derived growth Factor Receptor Signaling](#)

Application Details

Application Notes: WB:1:500-1:3000, IHC:1:50-1:100,

Restrictions: For Research Use only

Handling

Format: Liquid

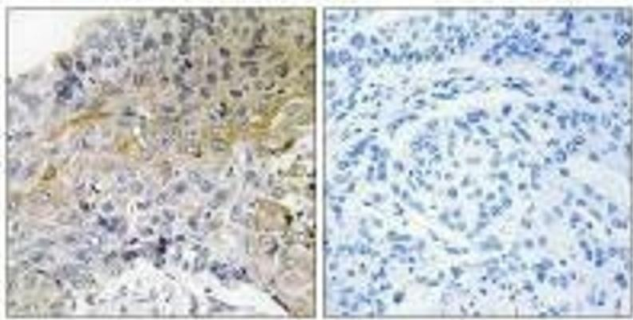
Buffer: Rabbit IgG in phosphate buffered saline (without Mg²⁺ and Ca²⁺), pH 7.4, 150 mM NaCl, 0.02 % sodium azide and 50 % glycerol.

Preservative: Sodium azide

Precaution of Use: This product contains Sodium azide: a POISONOUS AND HAZARDOUS SUBSTANCE which should be handled by trained staff only.

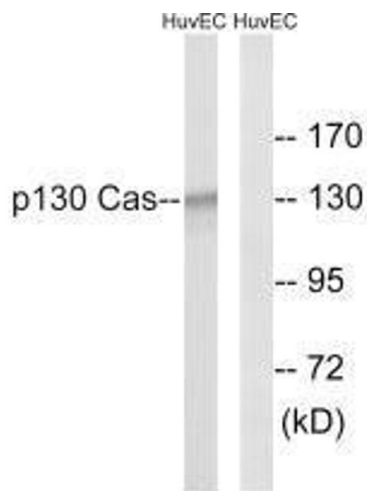
Storage: -20 °C, -80 °C

Storage Comment: Upon receipt, store at -20°C or -80°C. Avoid repeated freeze.



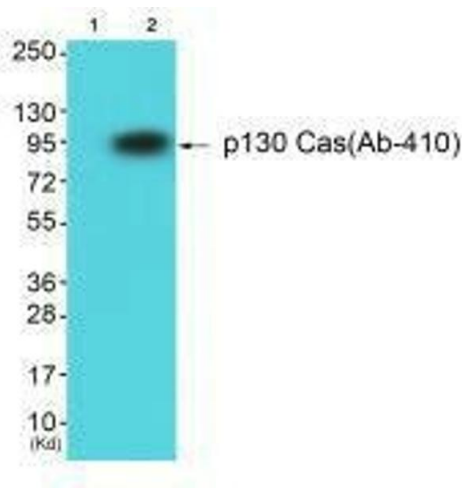
Immunohistochemistry

Image 1. Immunohistochemical analysis of paraffin-embedded human breast carcinoma tissue using p130 Cas (Ab-410) antibody.



Western Blotting

Image 2. Western blot analysis of extracts from NIH/3T3 cells, using p130 Cas (Ab-410) antibody.



Western Blotting

Image 3. Western blot analysis of extracts from HuvEc cells using p130 Cas (Ab-410) antibody. The lane on the left is treated with synthesized peptide.