

Datasheet for ABIN7180068
anti-PAK3 antibody (Ser154)[Go to Product page](#)

2 Images

Overview

Quantity:	100 µL
Target:	PAK3
Binding Specificity:	Ser154
Reactivity:	Human
Host:	Rabbit
Clonality:	Polyclonal
Conjugate:	This PAK3 antibody is un-conjugated
Application:	Western Blotting (WB), ELISA

Product Details

Immunogen:	Synthesized non-phosphopeptide derived from Human PAK3 around the phosphorylation site of serine 154 (Y-M-S(p)-F-T).
Isotype:	IgG
Cross-Reactivity:	Human, Mouse
Purification:	The antibody was affinity-purified from rabbit antiserum by affinity-chromatography using epitope-specific immunogen.

Target Details

Target:	PAK3
Alternative Name:	PAK3 (PAK3 Products)

Target Details

Background:	<p>Background: Serine/threonine protein kinase that plays a role in a variety of different signaling pathways including cytoskeleton regulation, cell migration, or cell cycle regulation. Plays a role in dendrite spine morphogenesis as well as synapse formation and plasticity. Acts as downstream effector of the small GTPases CDC42 and RAC1. Activation by the binding of active CDC42 and RAC1 results in a conformational change and a subsequent autophosphorylation on several serine and/or threonine residues. Phosphorylates MAPK4 and MAPK6 and activates the downstream target MAPKAPK5, a regulator of F-actin polymerization and cell migration. Additionally, phosphorylates TNNI3/troponin I to modulate calcium sensitivity and relaxation kinetics of thin myofilaments. May also be involved in early neuronal development.</p> <p>Allen K.M., Nat. Genet. 20:25-30(1998).</p> <p>Jiang C., Submitted (MAY-2000) to the EMBL/GenBank/DDBJ databases.</p> <p>Kitano T., Mol. Biol. Evol. 20:1281-1289(2003).</p> <p>Aliases: PAK3 antibody, OPHN3 antibody, Serine/threonine-protein kinase PAK 3 antibody, EC 2.7.11.1 antibody, Beta-PAK antibody, Oligophrenin-3 antibody, p21-activated kinase 3 antibody, PAK-3 antibody</p>
-------------	---

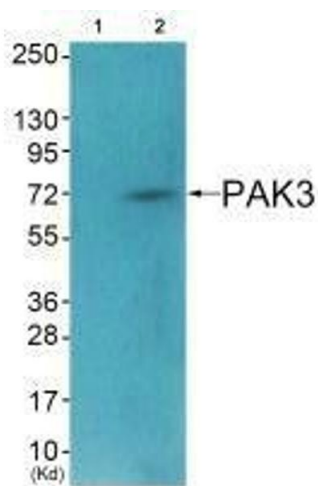
UniProt: [O75914](#)

Application Details

Application Notes:	WB:1:500-1:3000,
Restrictions:	For Research Use only

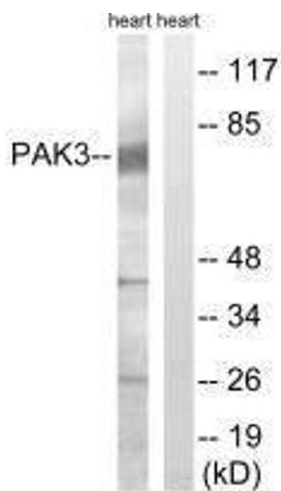
Handling

Format:	Liquid
Buffer:	Rabbit IgG in phosphate buffered saline (without Mg ²⁺ and Ca ²⁺), pH 7.4, 150 mM NaCl, 0.02 % sodium azide and 50 % glycerol.
Preservative:	Sodium azide
Precaution of Use:	This product contains Sodium azide: a POISONOUS AND HAZARDOUS SUBSTANCE which should be handled by trained staff only.
Storage:	-20 °C, -80 °C
Storage Comment:	Upon receipt, store at -20°C or -80°C. Avoid repeated freeze.



Western Blotting

Image 1. Western blot analysis of extracts from HeLa cells (Lane 2), using PAK3 (Ab-154) antibody. The lane on the left is treated with synthesized peptide.



Western Blotting

Image 2. Western blot analysis of extracts from rat heart, using PAK3 (Ab-154) antibody.