

Datasheet for ABIN7180070
anti-CD31 antibody (Tyr713)



[Go to Product page](#)

4 Images

Overview

Quantity:	100 µL
Target:	CD31 (PECAM1)
Binding Specificity:	Tyr713
Reactivity:	Human
Host:	Rabbit
Clonality:	Polyclonal
Conjugate:	This CD31 antibody is un-conjugated
Application:	Western Blotting (WB), Immunohistochemistry (IHC), Immunofluorescence (IF), ELISA

Product Details

Immunogen:	Synthesized non-phosphopeptide derived from Human PECAM-1 around the phosphorylation site of tyrosine 713 (T-V-Y(p)-S-E).
Isotype:	IgG
Cross-Reactivity:	Human, Mouse
Purification:	The antibody was affinity-purified from rabbit antiserum by affinity-chromatography using epitope-specific immunogen.

Target Details

Target:	CD31 (PECAM1)
Alternative Name:	PECAM1 (PECAM1 Products)

Target Details

Background: Background: Induces susceptibility to atherosclerosis By similarity. Cell adhesion molecule which is required for leukocyte transendothelial migration (TEM) under most inflammatory conditions. Tyr-690 plays a critical role in TEM and is required for efficient trafficking of PECAM1 to and from the lateral border recycling compartment (LBRC) and is also essential for the LBRC membrane to be targeted around migrating leukocytes. Prevents phagocyte ingestion of closely apposed viable cells by transmitting 'detachment' signals, and changes function on apoptosis, promoting tethering of dying cells to phagocytes (the encounter of a viable cell with a phagocyte via the homophilic interaction of PECAM1 on both cell surfaces leads to the viable cell's active repulsion from the phagocyte. During apoptosis, the inside-out signaling of PECAM1 is somehow disabled so that the apoptotic cell does not actively reject the phagocyte anymore. The lack of this repulsion signal together with the interaction of the eat-me signals and their respective receptors causes the attachment of the apoptotic cell to the phagocyte, thus triggering the process of engulfment). Isoform Delta15 is unable to protect against apoptosis. Modulates BDKRB2 activation. Regulates bradykinin- and hyperosmotic shock-induced ERK1/2 activation in human umbilical cord vein cells (HUVEC).

Tieming Zhao, J. Cell Biol., Jan 2001, 152: 65.

SM Watt, Blood, Nov 1993, 82: 2649 - 2663.

NETA ILAN, FASEB J, Feb 2001, 15: 362.

Aliases: Adhesion molecule antibody, CD31 antibody, CD31 antigen antibody, CD31 EndoCAM antibody, EndoCAM antibody, FLJ34100 antibody, FLJ58394 antibody, GPIIA antibody, GPIIA' antibody, PECA1 antibody, PECA1_HUMAN antibody, Pecam 1 antibody, PECAM 1 CD31 EndoCAM antibody, PECAM antibody, PECAM-1 antibody, Pecam1 antibody, Platelet and endothelial cell adhesion molecule 1 antibody, Platelet endothelial cell adhesion molecule antibody, Platelet/endothelial cell adhesion molecule 1 antibody

UniProt: [P16284](#)

Pathways: [Regulation of Actin Filament Polymerization](#)

Application Details

Application Notes: WB:1:500-1:3000, IHC:1:50-1:100, IF:1:100-1:500,

Restrictions: For Research Use only

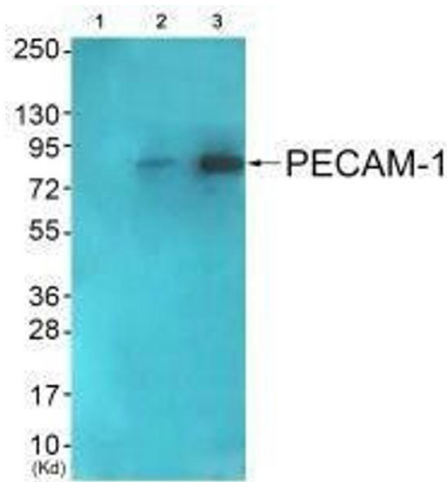
Handling

Format: Liquid

Handling

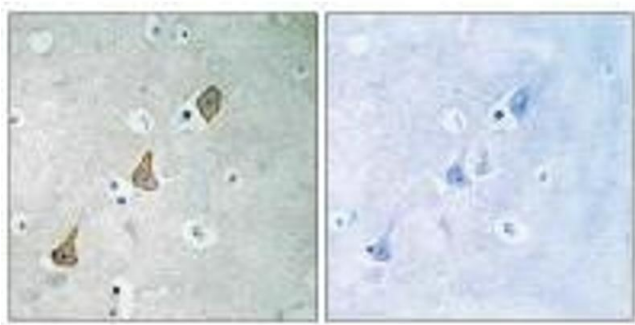
Buffer:	Rabbit IgG in phosphate buffered saline (without Mg2+ and Ca2+), pH 7.4, 150 mM NaCl, 0.02 % sodium azide and 50 % glycerol.
Preservative:	Sodium azide
Precaution of Use:	This product contains Sodium azide: a POISONOUS AND HAZARDOUS SUBSTANCE which should be handled by trained staff only.
Storage:	-20 °C,-80 °C
Storage Comment:	Upon receipt, store at -20°C or -80°C. Avoid repeated freeze.

Images



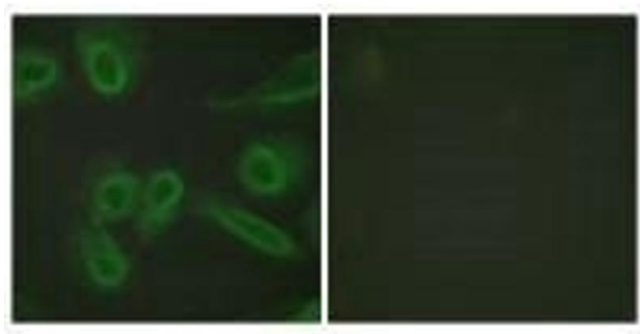
Western Blotting

Image 1. Western blot analysis of extracts from COS7 cells (Lane 2) and JK cells (Lane 3), using PECAM-1 (Ab-713) antibody. The lane on the left is treated with synthesized peptide.



Immunohistochemistry

Image 2. Immunohistochemistry analysis of paraffin-embedded human brain tissue using PECAM-1 (Ab-713) antibody.



Immunofluorescence

Image 3. Immunofluorescence analysis of HeLa cells, using PECAM-1 (Ab-713) antibody.

Please check the [product details page](#) for more images. Overall 4 images are available for ABIN7180070.