



Datasheet for ABIN7180071  
**anti-PRKAR2B antibody (Ser113)**



[Go to Product page](#)

2 Images

Overview

Quantity:	100 µL
Target:	PRKAR2B
Binding Specificity:	Ser113
Reactivity:	Human
Host:	Rabbit
Clonality:	Polyclonal
Conjugate:	This PRKAR2B antibody is un-conjugated
Application:	Western Blotting (WB), ELISA, Immunohistochemistry (IHC)

Product Details

Immunogen:	Synthesized non-phosphopeptide derived from Human PKA-R2beta around the phosphorylation site of serine 113 (R-A-S(p)-V-C).
Isotype:	IgG
Cross-Reactivity:	Human, Mouse, Rat
Purification:	The antibody was affinity-purified from rabbit antiserum by affinity-chromatography using epitope-specific immunogen.

Target Details

Target:	PRKAR2B
Alternative Name:	PRKAR2B ( <a href="#">PRKAR2B Products</a> )

## Target Details

---

Background: Background: Regulatory subunit of the cAMP-dependent protein kinases involved in cAMP signaling in cells. Type II regulatory chains mediate membrane association by binding to anchoring proteins, including the MAP2 kinase.

Levy F.O., Mol. Endocrinol. 2:1364-1373(1988).  
Ota T., Nat. Genet. 36:40-45(2004).  
Scherer S.W., Science 300:767-772(2003)

Aliases: AI451071 antibody, AW061005 antibody, cAMP dependent protein kinase type II beta regulatory chain antibody, cAMP dependent protein kinase type II beta regulatory subunit antibody, cAMP-dependent protein kinase type II-beta regulatory subunit antibody, H RG363E19.2 antibody, KAP3\_HUMAN antibody, MGC116401 antibody, Pkarb2 antibody, PRKAR 2 antibody, PRKAR2 antibody, PRKAR2B antibody, Protein kinase cAMP dependent regulatory type II beta antibody, RATDNA antibody, RII beta antibody, RII(beta) antibody, RIIbeta antibody, WUGSC:H RG363E19.2 antibody

---

UniProt: [P31323](#)

---

Pathways: [Hedgehog Signaling](#), [EGFR Signaling Pathway](#), [Neurotrophin Signaling Pathway](#), [Myometrial Relaxation and Contraction](#), [M Phase](#), [G-protein mediated Events](#), [Interaction of EGFR with phospholipase C-gamma](#), [SARS-CoV-2 Protein Interactome](#), [The Global Phosphorylation Landscape of SARS-CoV-2 Infection](#)

## Application Details

---

Application Notes: WB:1:500-1:3000, IHC:1:50-1:100,

---

Restrictions: For Research Use only

## Handling

---

Format: Liquid

---

Buffer: Rabbit IgG in phosphate buffered saline (without Mg<sup>2+</sup> and Ca<sup>2+</sup>), pH 7.4, 150 mM NaCl, 0.02 % sodium azide and 50 % glycerol.

---

Preservative: Sodium azide

---

Precaution of Use: This product contains Sodium azide: a POISONOUS AND HAZARDOUS SUBSTANCE which should be handled by trained staff only.

---

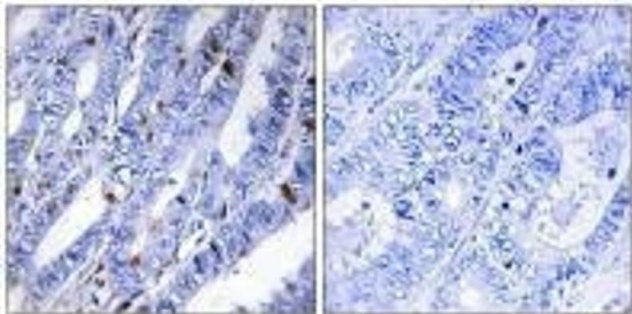
Storage: -20 °C,-80 °C

---

## Handling

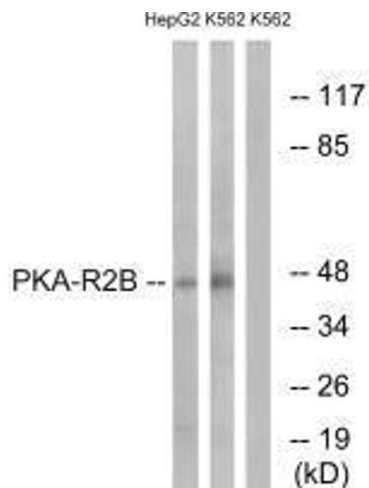
Storage Comment: Upon receipt, store at -20°C or -80°C. Avoid repeated freeze.

## Images



### Immunohistochemistry

**Image 1.** Immunohistochemistry analysis of paraffin-embedded human colon carcinoma tissue using PKA-R2β (Ab-113) antibody.



### Western Blotting

**Image 2.** Western blot analysis of extracts from HepG2 cells and K562 cells, using PKA-R2β (Ab-113) antibody.