



[Go to Product page](#)

Datasheet for ABIN7180075

## anti-Phospholipase C gamma 1 antibody (Tyr771)

### 3 Images

#### Overview

Quantity:	100 µL
Target:	Phospholipase C gamma 1 (PLCG1)
Binding Specificity:	Tyr771
Reactivity:	Human
Host:	Rabbit
Clonality:	Polyclonal
Conjugate:	This Phospholipase C gamma 1 antibody is un-conjugated
Application:	Western Blotting (WB), ELISA, Immunohistochemistry (IHC)

#### Product Details

Immunogen:	Synthesized non-phosphopeptide derived from Human PLCG1 around the phosphorylation site of tyrosine 771 (P-D-Y-G-A).
Isotype:	IgG
Cross-Reactivity:	Human, Mouse, Rat
Purification:	The antibody was affinity-purified from rabbit antiserum by affinity-chromatography using epitope-specific immunogen.

#### Target Details

Target:	Phospholipase C gamma 1 (PLCG1)
Alternative Name:	PLCG1 ( <a href="#">PLCG1 Products</a> )

## Target Details

---

**Background:** Background: Mediates the production of the second messenger molecules diacylglycerol (DAG) and inositol 1,4,5-trisphosphate (IP3). Plays an important role in the regulation of intracellular signaling cascades. Becomes activated in response to ligand-mediated activation of receptor-type tyrosine kinases, such as PDGFRA, PDGFRB, FGFR1, FGFR2, FGFR3 and FGFR4. Plays a role in actin reorganization and cell migration.

Denis Tvorogov, J. Cell Sci., Feb 2005, 118: 601 - 610.

Brenda J. Irvin, Mol. Cell. Biol., Dec 2000, 20: 9149 - 9161.

Benoit Poulin, J. Biol. Chem., Feb 2000, 275: 6411.

Ichiro Nakamura, J. Cell Biol., Jan 2001, 152: 361.

Aliases: 1 phosphatidyl D myo inositol 4 5 bisphosphate antibody, 1 phosphatidylinositol 4 5 bisphosphate phosphodiesterase gamma 1 antibody, 1-phosphatidylinositol-4,5-bisphosphate phosphodiesterase gamma-1 antibody, Inositoltrisphosphohydrolase antibody, Monophosphatidylinositol phosphodiesterase antibody, NCKAP3 antibody, Phosphatidylinositol phospholipase C antibody, Phosphoinositidase C antibody, Phosphoinositide phospholipase C antibody, Phosphoinositide phospholipase C-gamma-1 antibody, Phospholipase C 148 antibody, Phospholipase C gamma 1 antibody, Phospholipase C-gamma-1 antibody, Phospholipase C-II antibody, PLC gamma 1 antibody, PLC II antibody, PLC-148 antibody, PLC-gamma-1 antibody, PLC-II antibody, PLC1 antibody, PLC148 antibody, Plcg1 antibody, PLCG1\_HUMAN antibody, PLCgamma1 antibody

---

**UniProt:** [P19174](#)

**Pathways:** [RTK Signaling](#), [WNT Signaling](#), [TCR Signaling](#), [Fc-epsilon Receptor Signaling Pathway](#), [EGFR Signaling Pathway](#), [Neurotrophin Signaling Pathway](#), [Thyroid Hormone Synthesis](#), [Inositol Metabolic Process](#), [Myometrial Relaxation and Contraction](#), [Regulation of Muscle Cell Differentiation](#), [Regulation of G-Protein Coupled Receptor Protein Signaling](#), [Skeletal Muscle Fiber Development](#), [G-protein mediated Events](#), [Signaling Events mediated by VEGFR1 and VEGFR2](#), [Interaction of EGFR with phospholipase C-gamma](#), [VEGFR1 Specific Signals](#), [VEGF Signaling](#)

## Application Details

---

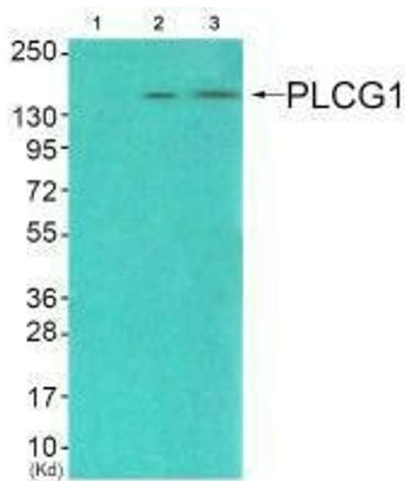
**Application Notes:** WB:1:500-1:3000, IHC:1:50-1:100,

**Restrictions:** For Research Use only

## Handling

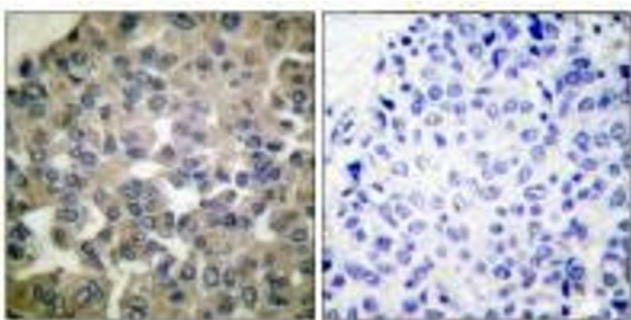
Format:	Liquid
Buffer:	Rabbit IgG in phosphate buffered saline (without Mg <sup>2+</sup> and Ca <sup>2+</sup> ), pH 7.4, 150 mM NaCl, 0.02 % sodium azide and 50 % glycerol.
Preservative:	Sodium azide
Precaution of Use:	This product contains Sodium azide: a POISONOUS AND HAZARDOUS SUBSTANCE which should be handled by trained staff only.
Storage:	-20 °C,-80 °C
Storage Comment:	Upon receipt, store at -20°C or -80°C. Avoid repeated freeze.

## Images



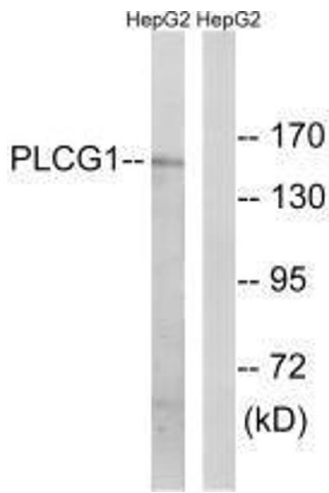
### Western Blotting

**Image 1.** Western blot analysis of extracts from COS7 cells (Lane 2), and JK cells (Lane 3), using PLCG1 (Ab-771) antibody. The lane on the left is treated with synthesized peptide.



### Immunohistochemistry

**Image 2.** Immunohistochemical analysis of paraffin-embedded human breast carcinoma tissue using PLCG1 (Ab-771) antibody.



### Western Blotting

**Image 3.** Western blot analysis of extracts from COS7 cells treated with EGF (200 ng/mL, 30 min), using PLCG1 (Ab-771) antibody.