

Datasheet for ABIN7180081

anti-Splicing Factor 1 antibody (Ser82)

3 Images



[Go to Product page](#)

Overview

Quantity:	100 µL
Target:	Splicing Factor 1 (SF1)
Binding Specificity:	Ser82
Reactivity:	Human
Host:	Rabbit
Clonality:	Polyclonal
Conjugate:	This Splicing Factor 1 antibody is un-conjugated
Application:	Western Blotting (WB), ELISA, Immunohistochemistry (IHC), Immunofluorescence (IF)

Product Details

Immunogen:	Synthesized non-phosphopeptide derived from Human SF1 around the phosphorylation site of serine 82 (S-P-S(p)-P-E).
Isotype:	IgG
Cross-Reactivity:	Human, Mouse
Purification:	The antibody was affinity-purified from rabbit antiserum by affinity-chromatography using epitope-specific immunogen.

Target Details

Target:	Splicing Factor 1 (SF1)
Alternative Name:	SF1 (SF1 Products)

Target Details

Background: Background: Necessary for the ATP-dependent first step of spliceosome assembly. Binds to the intron branch point sequence (BPS) 5'-UACUAAC-3' of the pre-mRNA. May act as transcription repressor.

Susan Y. Park, Development, May 2005, 132: 2415 - 2423.

Dujin Zhou, Mol. Endocrinol., Jul 2000, 14: 986.

Dagmar Wilhelm, Genes & Dev., Jul 2002, 16: 1839.

Philipp Gut, Development, Oct 2005, 132: 4611 - 4619.

Aliases: SF1 antibody, ZFM1 antibody, ZNF162 antibody, Splicing factor 1 antibody, Mammalian branch point-binding protein antibody, BBP antibody, mBBP antibody, Transcription factor ZFM1 antibody, Zinc finger gene in MEN1 locus antibody, Zinc finger protein 162 antibody

UniProt: [Q15637](#)

Pathways: [Nuclear Receptor Transcription Pathway](#), [Steroid Hormone Mediated Signaling Pathway](#), [Ribonucleoprotein Complex Subunit Organization](#), [Maintenance of Protein Location](#)

Application Details

Application Notes: WB:1:500-1:3000, IHC:1:50-1:100, IF:1:100-1:500,

Restrictions: For Research Use only

Handling

Format: Liquid

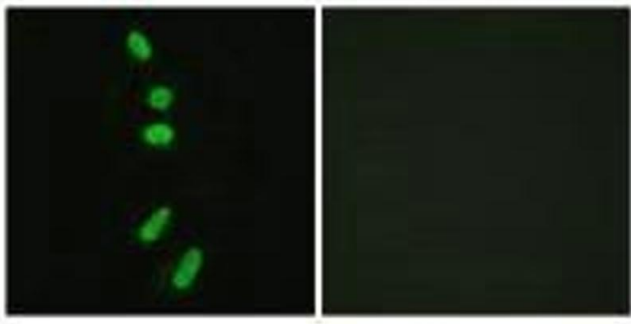
Buffer: Rabbit IgG in phosphate buffered saline (without Mg²⁺ and Ca²⁺), pH 7.4, 150 mM NaCl, 0.02 % sodium azide and 50 % glycerol.

Preservative: Sodium azide

Precaution of Use: This product contains Sodium azide: a POISONOUS AND HAZARDOUS SUBSTANCE which should be handled by trained staff only.

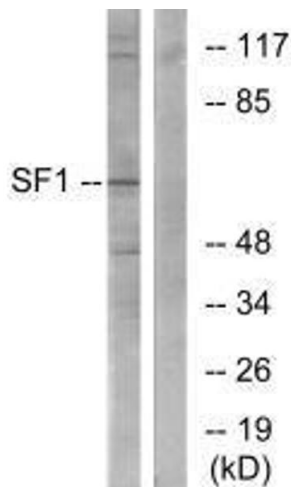
Storage: -20 °C, -80 °C

Storage Comment: Upon receipt, store at -20°C or -80°C. Avoid repeated freeze.



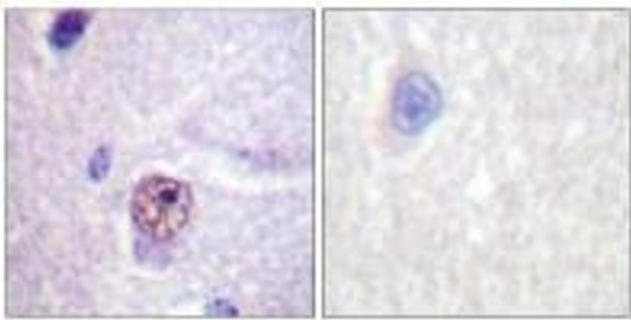
Immunofluorescence

Image 1. Immunofluorescence analysis of HeLa cells, using SF1 (Ab-82) antibody.



Western Blotting

Image 2. Western blot analysis of extracts from COLO205 cells, using SF1 (Ab-82) antibody.



Immunohistochemistry

Image 3. Immunohistochemistry analysis of paraffin-embedded human brain tissue using SF1 (Ab-82) antibody.