



Datasheet for ABIN7180116  
**anti-AKR1A1 antibody (C-Term)**



[Go to Product page](#)

1 Image

Overview

Quantity:	100 µL
Target:	AKR1A1
Binding Specificity:	C-Term
Reactivity:	Human
Host:	Rabbit
Clonality:	Polyclonal
Conjugate:	This AKR1A1 antibody is un-conjugated
Application:	Western Blotting (WB), ELISA

Product Details

Immunogen:	Synthesized peptide derived from C-terminal of Human AKR1A1.
Isotype:	IgG
Cross-Reactivity:	Human, Mouse, Rat
Purification:	The antibody was affinity-purified from rabbit antiserum by affinity-chromatography using epitope-specific immunogen.

Target Details

Target:	AKR1A1
Alternative Name:	AKR1A1 ( <a href="#">AKR1A1 Products</a> )
Background:	Background: Catalyzes the NADPH-dependent reduction of a variety of aromatic and aliphatic

## Target Details

---

aldehydes to their corresponding alcohols. Catalyzes the reduction of mevaldate to mevalonic acid and of glyceraldehyde to glycerol. Has broad substrate specificity. In vitro substrates include succinic semialdehyde, 4-nitrobenzaldehyde, 1,2-naphthoquinone, methylglyoxal, and D-glucuronic acid. Plays a role in the activation of procarcinogens, such as polycyclic aromatic hydrocarbon trans-dihydrodiols, and in the metabolism of various xenobiotics and drugs, including the anthracyclines doxorubicin (DOX) and daunorubicin (DAUN).

Bohren K.M., J. Biol. Chem. 264:9547-9551(1989).

Fujii J., Cytogenet. Cell Genet. 84:230-232(1999).

Barski O.A., Genomics 60:188-198(1999).

Aliases: AK1A1\_HUMAN antibody, Akr1a1 antibody, Alcohol dehydrogenase [NADP+] antibody, Alcohol dehydrogenase antibody, Aldehyde reductase antibody, Aldo keto reductase family 1 member A1 (aldehyde reductase) antibody, Aldo-keto reductase family 1 member A1 antibody, ALDR1 antibody, ALR antibody, ARM antibody, DD3 antibody, MGC12529 antibody, MGC1380 antibody

---

UniProt: [P14550](#)

---

Pathways: [Monocarboxylic Acid Catabolic Process](#)

## Application Details

---

Application Notes: WB:1:500-1:3000,

---

Restrictions: For Research Use only

## Handling

---

Format: Liquid

---

Buffer: Rabbit IgG in phosphate buffered saline (without Mg<sup>2+</sup> and Ca<sup>2+</sup>), pH 7.4, 150 mM NaCl, 0.02 % sodium azide and 50 % glycerol.

---

Preservative: Sodium azide

---

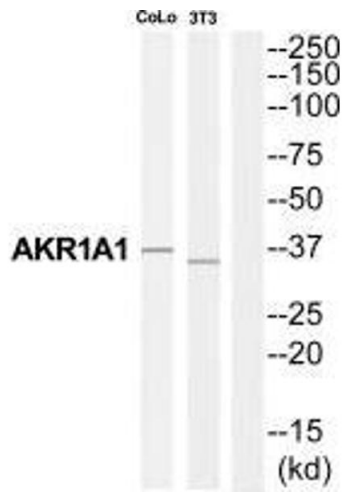
Precaution of Use: This product contains Sodium azide: a POISONOUS AND HAZARDOUS SUBSTANCE which should be handled by trained staff only.

---

Storage: -20 °C,-80 °C

---

Storage Comment: Upon receipt, store at -20°C or -80°C. Avoid repeated freeze.



### Western Blotting

**Image 1.** Western blot analysis of extracts from COLO205 cells and NIH-3T3 cells, using AKR1A1 antibody.