

Datasheet for ABIN7180128
anti-B4GALT1 antibody (C-Term)[Go to Product page](#)

1 Image

Overview

Quantity:	100 µL
Target:	B4GALT1
Binding Specificity:	C-Term
Reactivity:	Human
Host:	Rabbit
Clonality:	Polyclonal
Conjugate:	This B4GALT1 antibody is un-conjugated
Application:	Western Blotting (WB), ELISA

Product Details

Immunogen:	Synthesized peptide derived from C-terminal of Human B4GALT1.
Isotype:	IgG
Cross-Reactivity:	Human, Mouse
Purification:	The antibody was affinity-purified from rabbit antiserum by affinity-chromatography using epitope-specific immunogen.

Target Details

Target:	B4GALT1
Alternative Name:	B4GALT1 (B4GALT1 Products)
Background:	Background: The Golgi complex form catalyzes the production of lactose in the lactating

Target Details

mammary gland and could also be responsible for the synthesis of complex-type N-linked oligosaccharides in many glycoproteins as well as the carbohydrate moieties of glycolipids. The cell surface form functions as a recognition molecule during a variety of cell to cell and cell to matrix interactions, as those occurring during development and egg fertilization, by binding to specific oligosaccharide ligands on opposing cells or in the extracellular matrix.

Masri K.A., Biochem. Biophys. Res. Commun. 157:657-663(1988).

Watzel G., Nucleic Acids Res. 18:7174-7174(1990).

Mengle-Gaw L., Biochem. Biophys. Res. Commun. 176:1269-1276(1991).

Aliases: 384.Beta-N-acetylglucosaminyl-glycolipid beta-1,4-galactosyltransferase antibody, 4-galactosyltransferase 1 antibody, 4-GalTase 1 antibody, b4Gal-T1 antibody, B4galt1 antibody, B4GT1_HUMAN antibody, Beta-1 antibody, Beta-N-acetylglucosaminylglycopeptide beta-1,4-galactosyltransferase antibody, Beta4Gal-T1 antibody, CDG2D antibody, GGTB2 antibody, GT1 antibody, GTB antibody, Lactose synthase A protein antibody, N-acetylglucosamine synthase antibody, Nal synthase antibody, Processed beta-1 antibody, UDP-Gal:beta-GlcNAc beta-1 antibody, UDP-galactose:beta-N-acetylglucosamine beta-1 antibody

UniProt: [P15291](#)

Pathways: [Glycosaminoglycan Metabolic Process](#)

Application Details

Application Notes: WB:1:500-1:3000,

Restrictions: For Research Use only

Handling

Format: Liquid

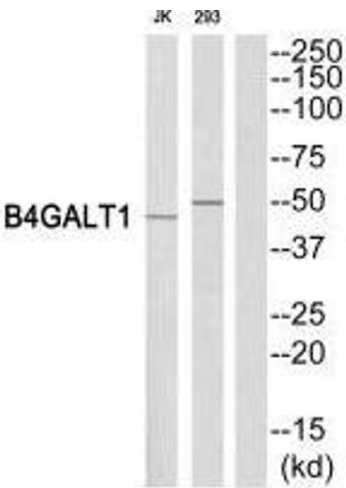
Buffer: Rabbit IgG in phosphate buffered saline (without Mg²⁺ and Ca²⁺), pH 7.4, 150 mM NaCl, 0.02 % sodium azide and 50 % glycerol.

Preservative: Sodium azide

Precaution of Use: This product contains Sodium azide: a POISONOUS AND HAZARDOUS SUBSTANCE which should be handled by trained staff only.

Storage: -20 °C,-80 °C

Storage Comment: Upon receipt, store at -20°C or -80°C. Avoid repeated freeze.



Western Blotting

Image 1. Western blot analysis of extracts from Jurkat/293 cells, using B4GALT1 antibody.