



Datasheet for ABIN7180131  
**anti-BMP8A antibody (C-Term)**



[Go to Product page](#)

2 Images

Overview

Quantity:	100 µL
Target:	BMP8A
Binding Specificity:	C-Term
Reactivity:	Human
Host:	Rabbit
Clonality:	Polyclonal
Conjugate:	This BMP8A antibody is un-conjugated
Application:	Western Blotting (WB), ELISA, Immunofluorescence (IF)

Product Details

Immunogen:	Synthesized peptide derived from C-terminal of Human BMP8A.
Isotype:	IgG
Cross-Reactivity:	Human
Purification:	The antibody was affinity-purified from rabbit antiserum by affinity-chromatography using epitope-specific immunogen.

Target Details

Target:	BMP8A
Alternative Name:	BMP8A ( <a href="#">BMP8A Products</a> )
Background:	Background: Induces cartilage and bone formation. May be the osteoinductive factor

## Target Details

---

responsible for the phenomenon of epithelial osteogenesis. Plays a role in calcium regulation and bone homeostasis By similarity. Signaling protein involved in regulation of thermogenesis and energy balance. Proposed to increase the peripheral response of brown adipose tissue (BAT) to adrenergic stimulation while acting centrally in the hypothalamus to increase sympathetic output to BAT.

Onishi M., Submitted (JUN-2003) to the EMBL/GenBank/DDBJ databases.

Gregory S.G., Nature 441:315-321(2006).

Aliases: BMP-8A antibody, BMP8 antibody, Bmp8a antibody, BMP8A\_HUMAN antibody, Bone morphogenetic protein 8A antibody, FLJ14351 antibody, FLJ45264 antibody, OP 2 antibody, Osteogenic protein 2 antibody

---

UniProt: [Q7Z5Y6](#)

Pathways: [Negative Regulation of Hormone Secretion](#)

## Application Details

---

Application Notes: WB:1:500-1:3000, IF:1:100-1:500,

Restrictions: For Research Use only

## Handling

---

Format: Liquid

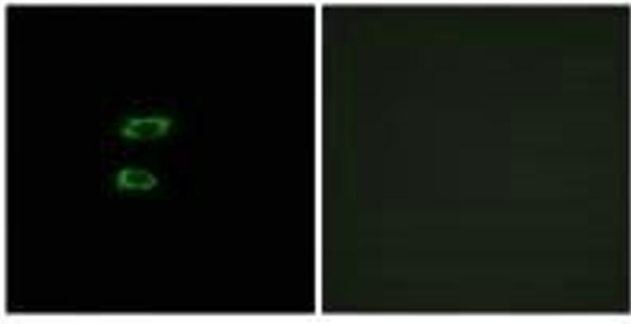
Buffer: Rabbit IgG in phosphate buffered saline (without Mg<sup>2+</sup> and Ca<sup>2+</sup>), pH 7.4, 150 mM NaCl, 0.02 % sodium azide and 50 % glycerol.

Preservative: Sodium azide

Precaution of Use: This product contains Sodium azide: a POISONOUS AND HAZARDOUS SUBSTANCE which should be handled by trained staff only.

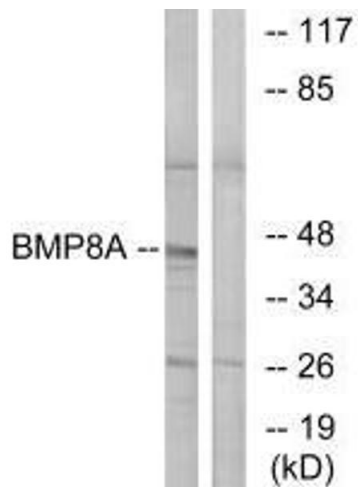
Storage: -20 °C,-80 °C

Storage Comment: Upon receipt, store at -20°C or -80°C. Avoid repeated freeze.



### Immunofluorescence

**Image 1.** Immunofluorescence analysis of A549 cells, using BMP8A antibody.



### Western Blotting

**Image 2.** Western blot analysis of extracts from COLO cells, using BMP8A antibody.