



[Go to Product page](#)

Datasheet for ABIN7180133
anti-BTLA antibody (C-Term)

1 Image

Overview

Quantity:	100 µL
Target:	BTLA
Binding Specificity:	C-Term
Reactivity:	Human
Host:	Rabbit
Clonality:	Polyclonal
Conjugate:	This BTLA antibody is un-conjugated
Application:	Western Blotting (WB), ELISA

Product Details

Immunogen:	Synthesized peptide derived from C-terminal of Human BTLA.
Isotype:	IgG
Cross-Reactivity:	Human
Purification:	The antibody was affinity-purified from rabbit antiserum by affinity-chromatography using epitope-specific immunogen.

Target Details

Target:	BTLA
Alternative Name:	BTLA (BTLA Products)
Background:	Background: Lymphocyte inhibitory receptor which inhibits lymphocytes during immune

Target Details

response.

Watanabe N., Nat. Immunol. 4:670-679(2003).

Mao Y., Submitted (APR-2004) to the EMBL/GenBank/DDBJ databases.

Oaks M.K., Submitted (SEP-2005) to the EMBL/GenBank/DDBJ databases.

Aliases: B and T lymphocyte associated protein antibody, B and T lymphocyte attenuator antibody, B and T lymphocyte associated antibody, B- and T-lymphocyte attenuator antibody, B- and T-lymphocyte-associated protein antibody, BTLA antibody, BTLA_HUMAN antibody, BTLA1 antibody, CD272 antibody, CD272 antigen antibody, FLJ16065 antibody, MGC129743 antibody

UniProt: [Q7Z6A9](#)

Pathways: [Cancer Immune Checkpoints](#)

Application Details

Application Notes: WB:1:500-1:3000,

Restrictions: For Research Use only

Handling

Format: Liquid

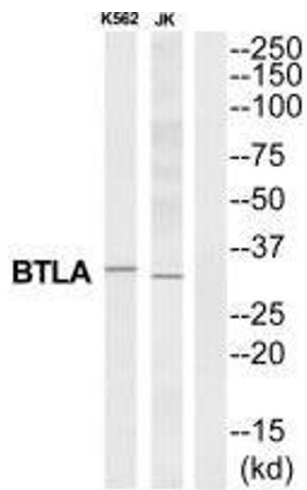
Buffer: Rabbit IgG in phosphate buffered saline (without Mg²⁺ and Ca²⁺), pH 7.4, 150 mM NaCl, 0.02 % sodium azide and 50 % glycerol.

Preservative: Sodium azide

Precaution of Use: This product contains Sodium azide: a POISONOUS AND HAZARDOUS SUBSTANCE which should be handled by trained staff only.

Storage: -20 °C,-80 °C

Storage Comment: Upon receipt, store at -20°C or -80°C. Avoid repeated freeze.



Western Blotting

Image 1. Western blot analysis of extracts from K562/Jurkat cells, using BTLA antibody.